

Oral-12

Wednesday, March 12, 2025

# 197 - Response to HIV Treatment After Long-Acting Cabotegravir Preexposure Prophylaxis in HPTN 083

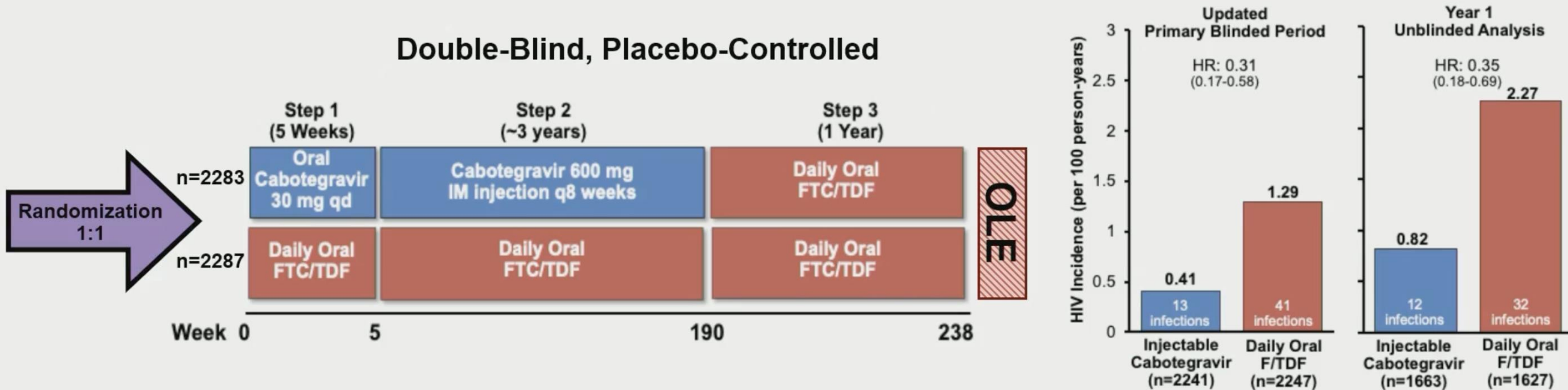
**Raphael J. Landovitz**

*University of California Los Angeles, Los Angeles, CA, USA*

*Disclosure:* Dr Landovitz has Self: Fees for participation in review activities, eg, data monitoring boards, statistical analysis, or end point adjudication committees with Merck & Co, Inc and RedQueen Therapeutics and Self: Consulting or advisor fee with Gilead Sciences, Inc, Merck & Co, Inc, and ViiV Healthcare.

**CROI 2025**

# BACKGROUND



- **Population:** MSM/transgender women
- **Enrollment Regions:** US, Brazil, Peru, Argentina, South Africa, Vietnam, and Thailand

**DSMB recommended early termination of blinded phase of this study, which continues as Open Label Extension (OLE)**

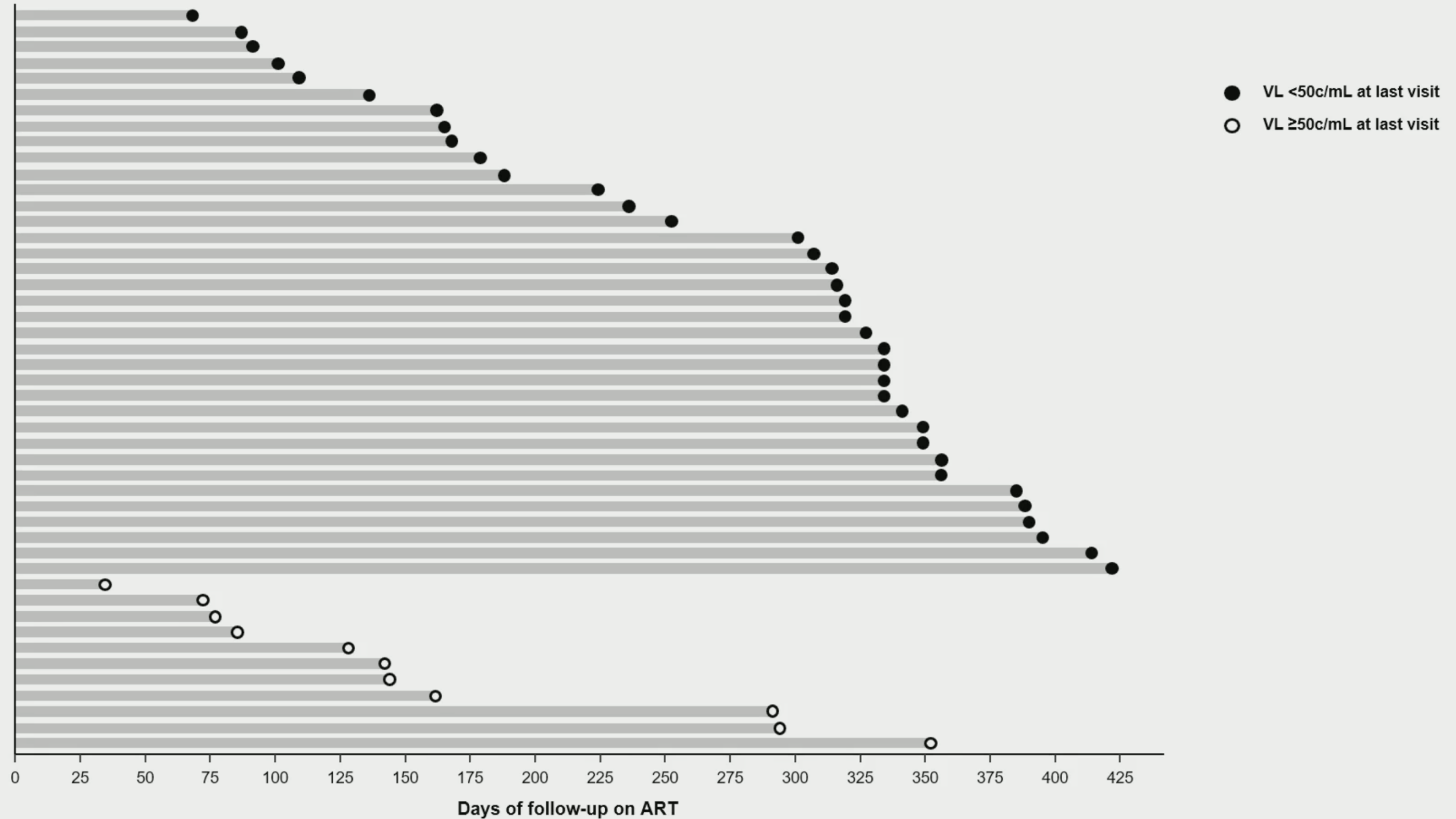


# METHODS

---

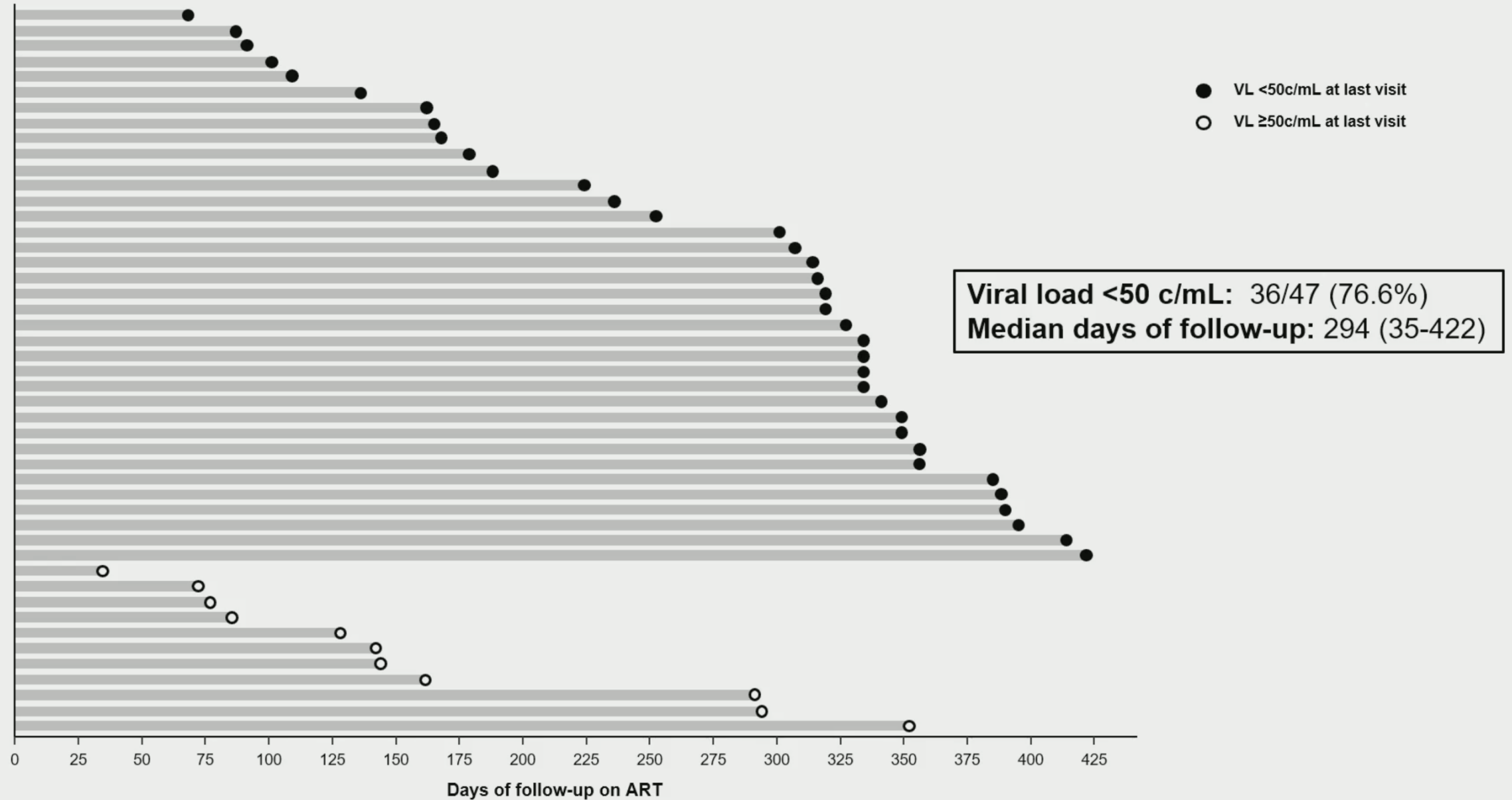
- **Evaluated ART outcomes in MSM and TGW exposed to CAB-LA with HIV acquisition in HPTN 083**
- **ART regimens chosen locally; genotyping available for some**
- **Included those diagnosed post  $\geq 1$  CAB-LA injection, with  $>30$  days ART follow-up (first HIV+ visit prior to 12/1/23)**
- **HIV viral load and genotyping based on retrospective centralized testing**

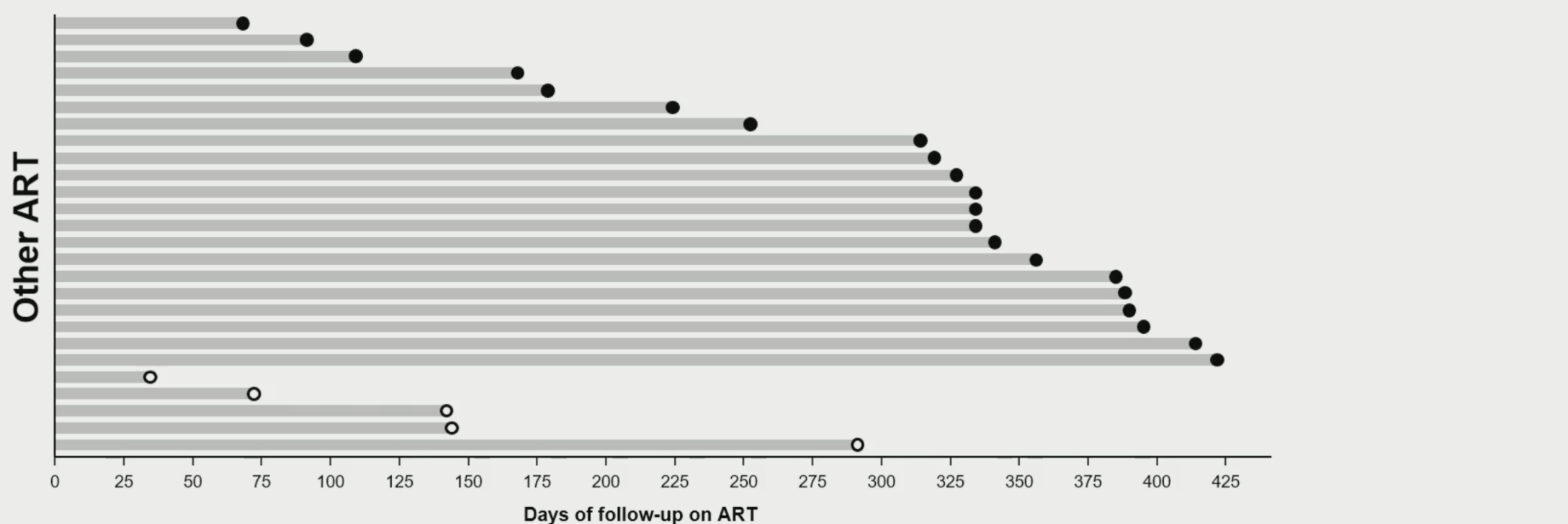
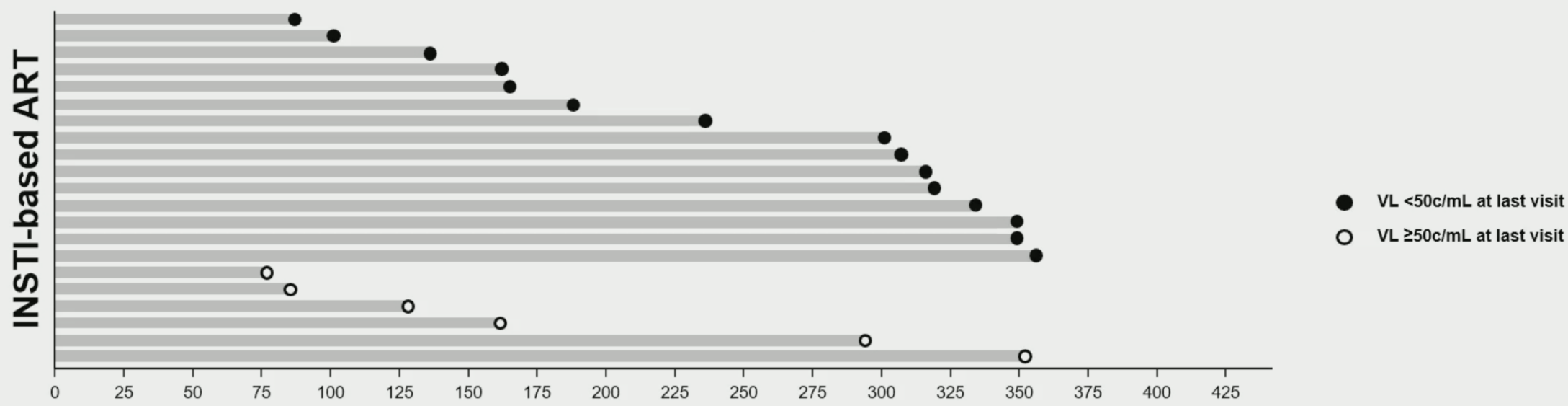
# RESULTS

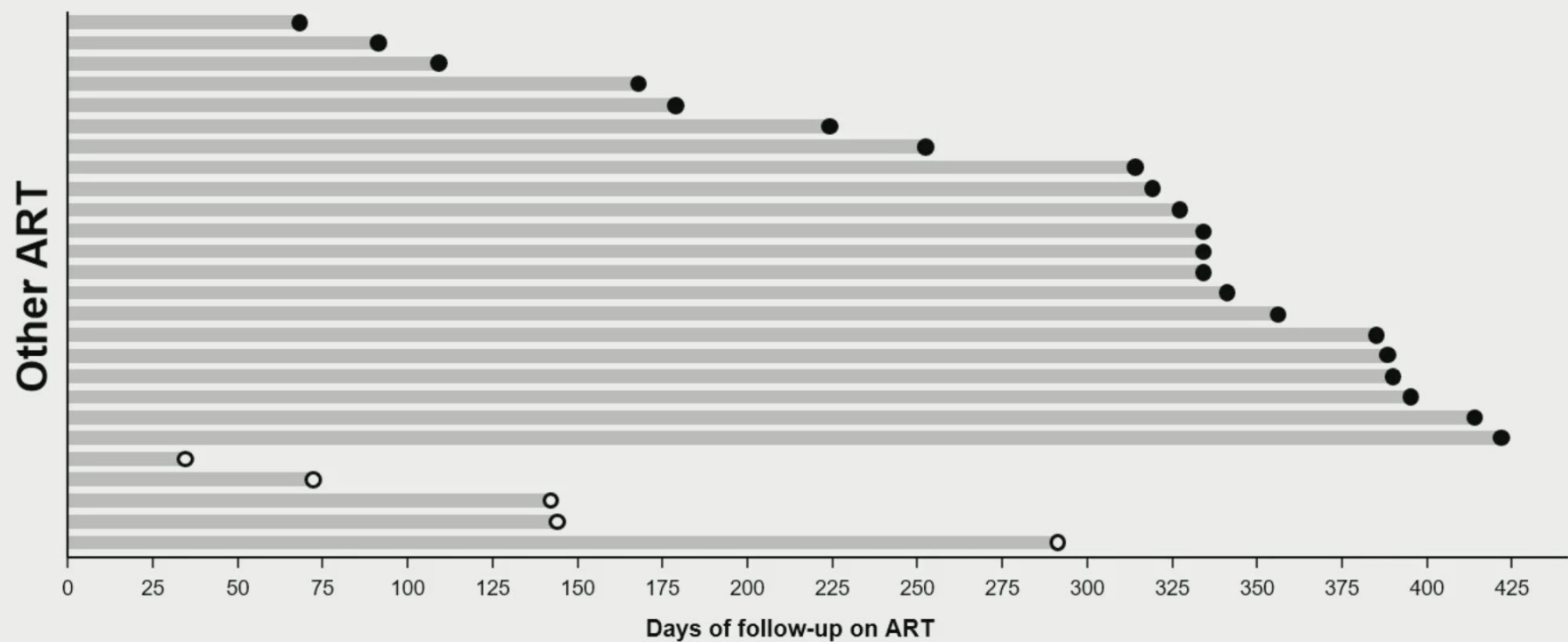
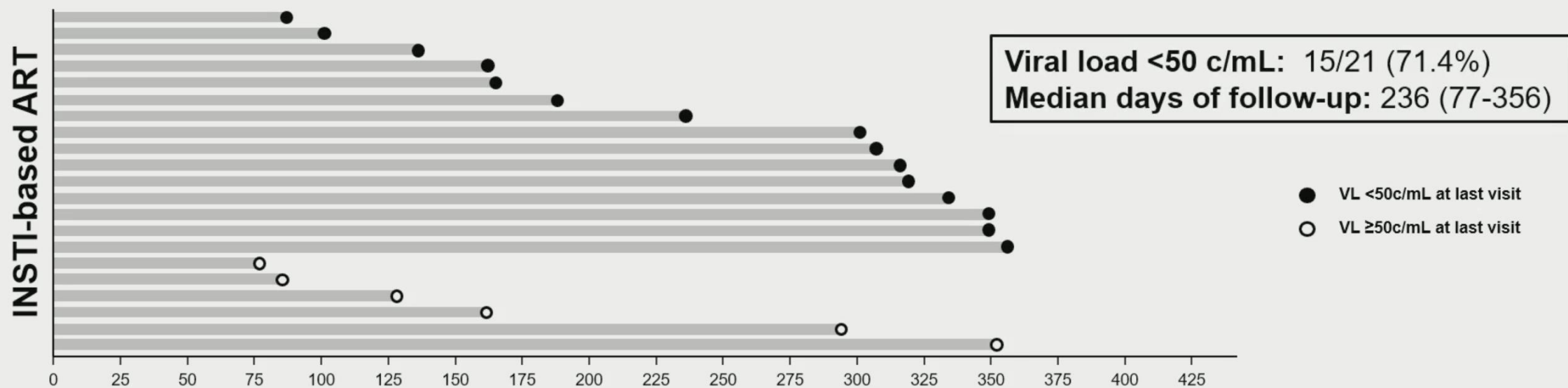




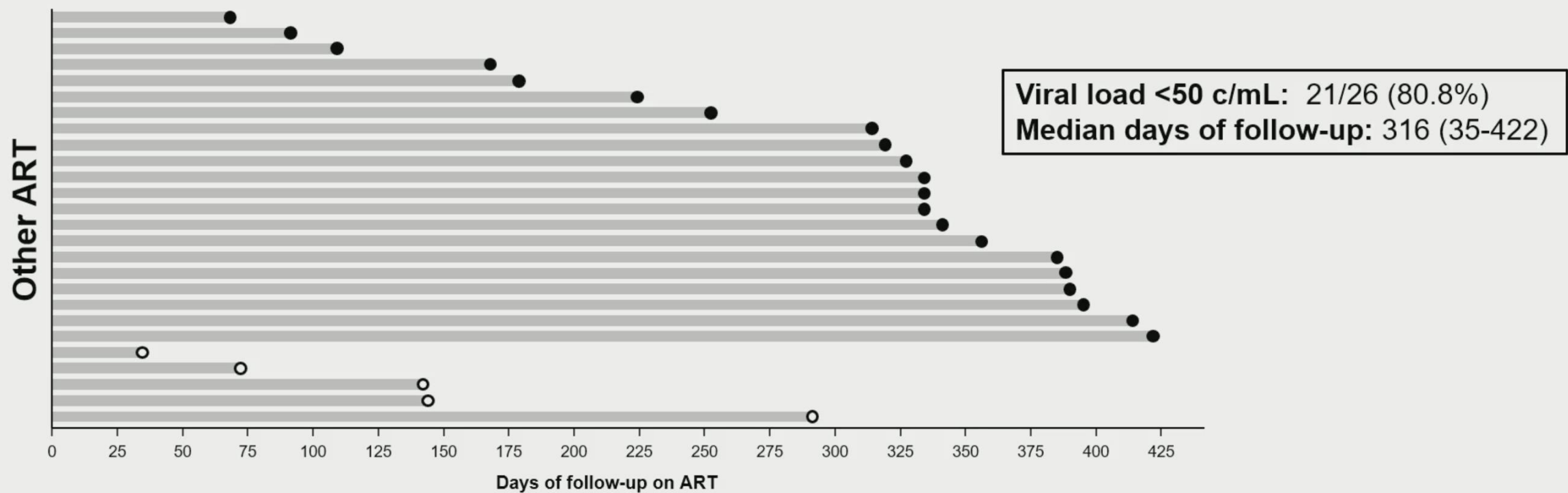
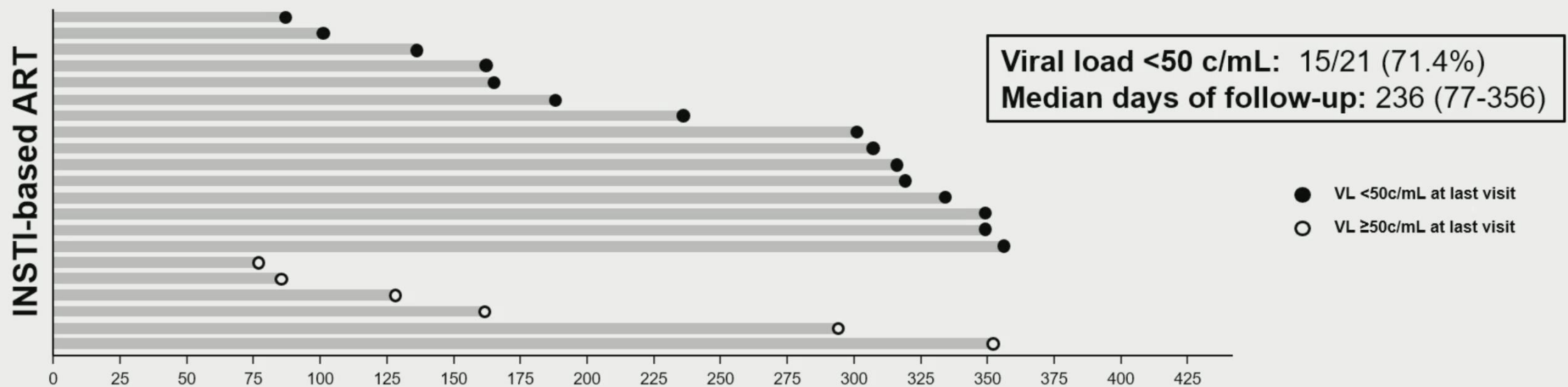
# RESULTS

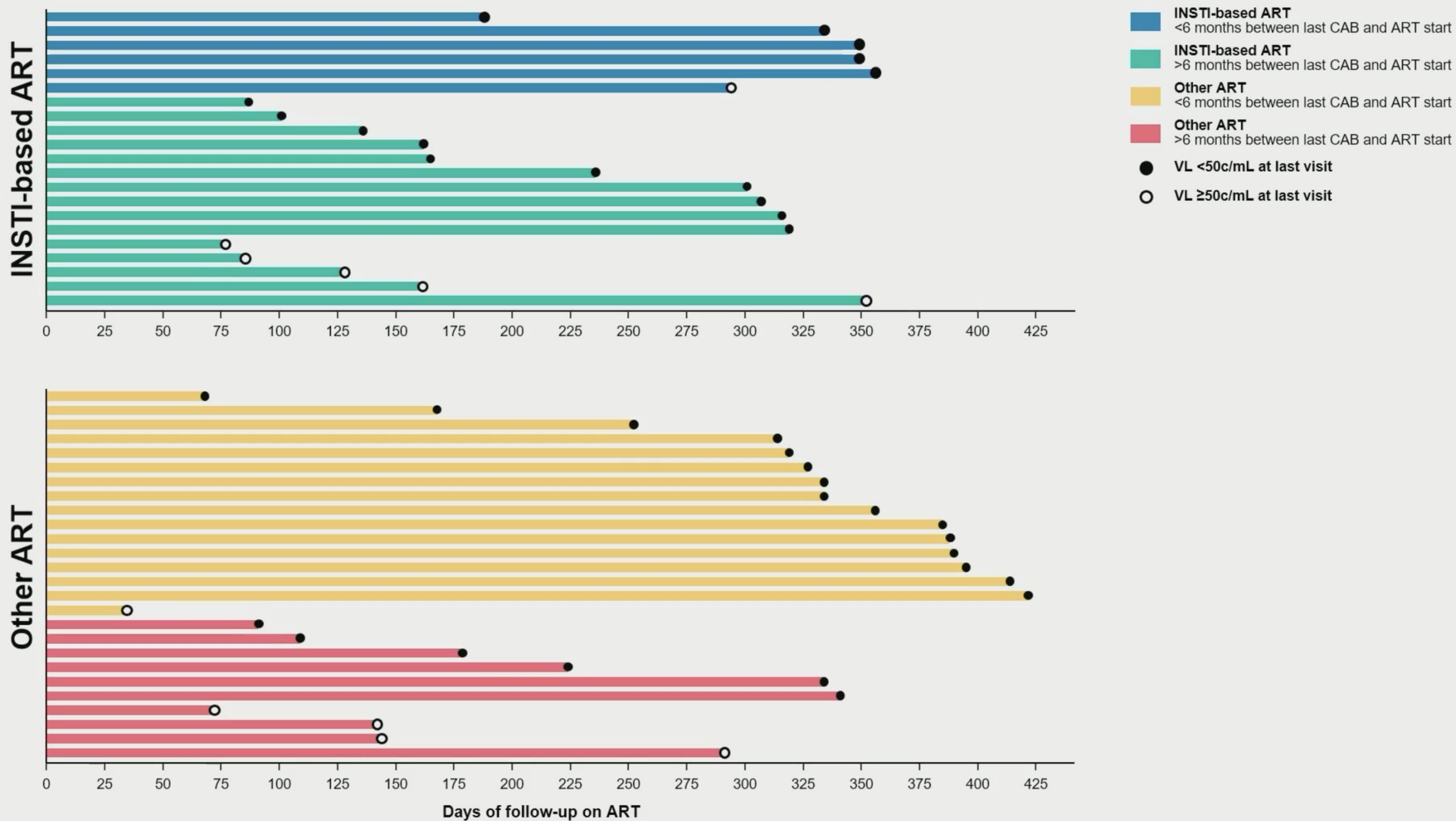


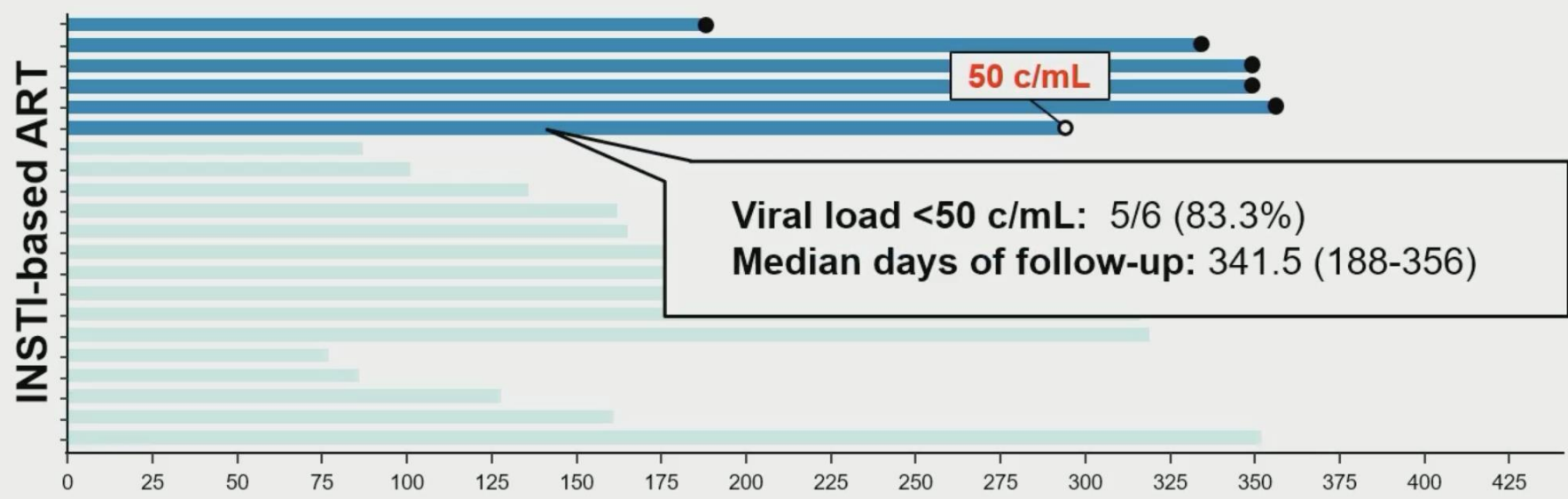




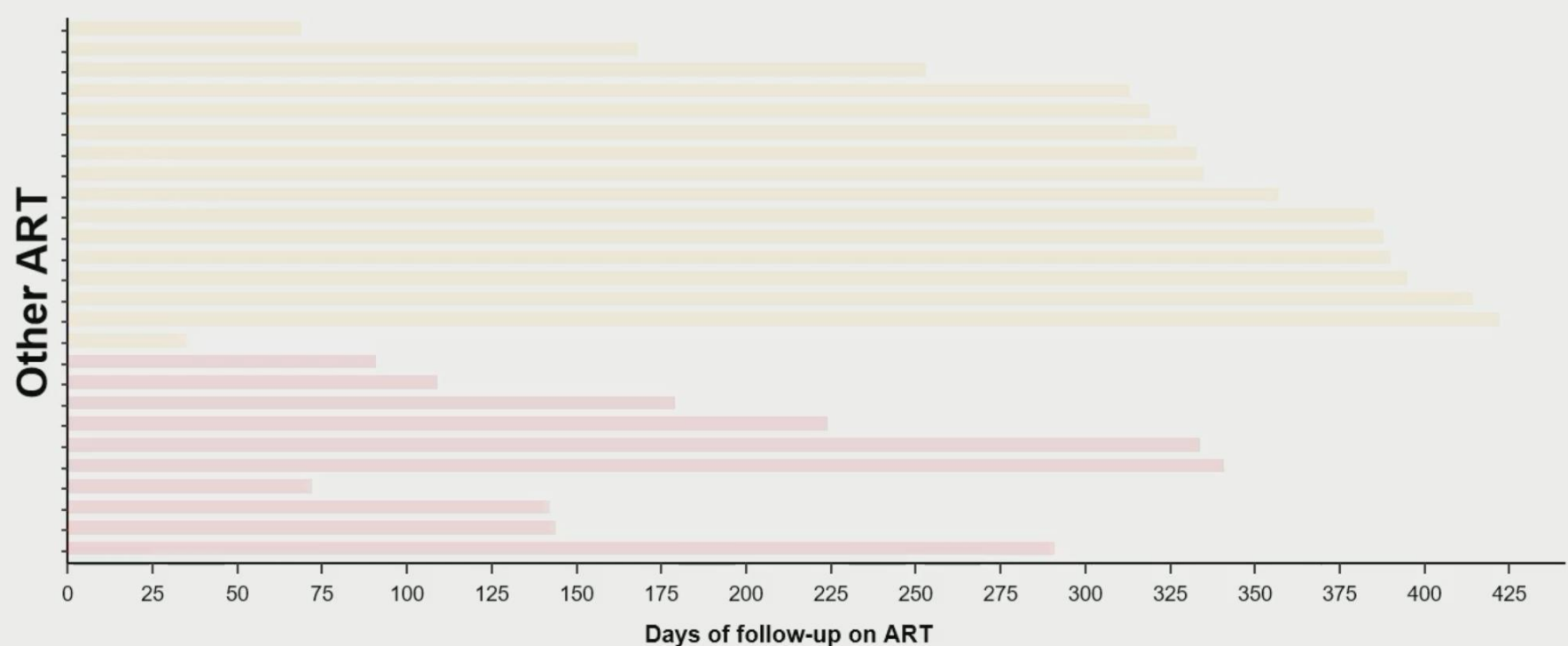




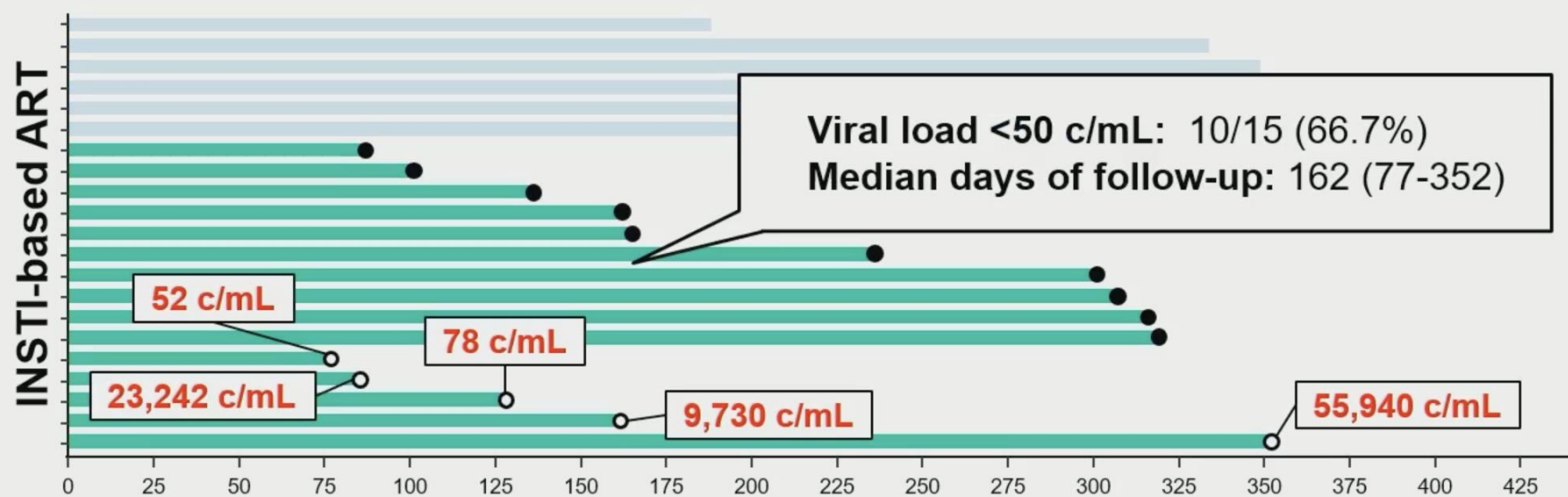




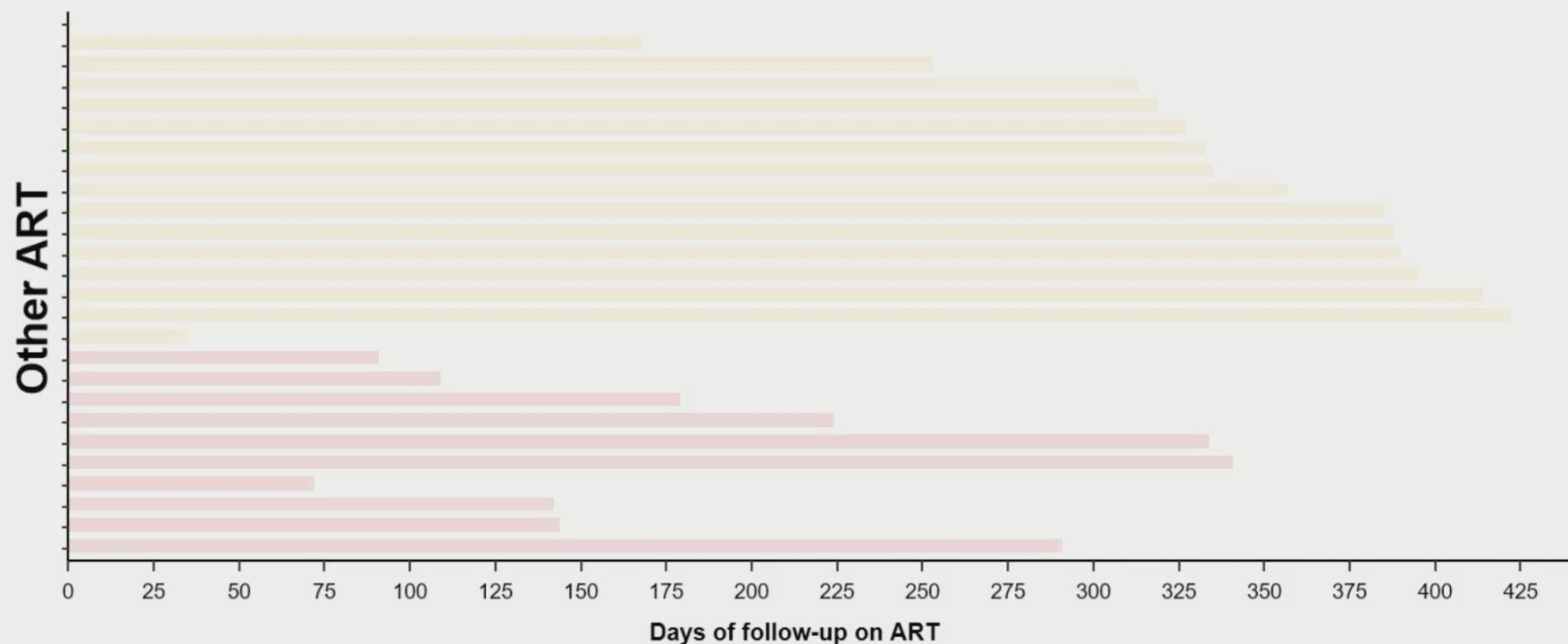
- INSTI-based ART**  
◻ <6 months between last CAB and ART start
- INSTI-based ART**  
◻ ≥6 months between last CAB and ART start
- Other ART**  
◻ <6 months between last CAB and ART start
- Other ART**  
◻ ≥6 months between last CAB and ART start
- VL <50c/mL at last visit
- VL ≥50c/mL at last visit



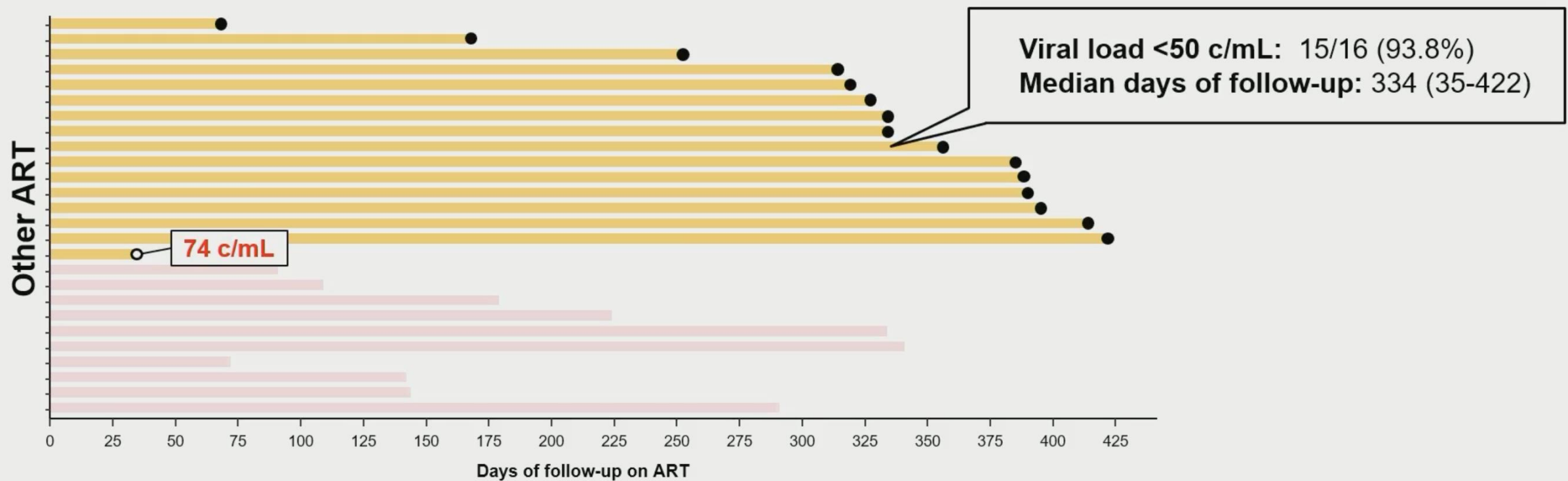
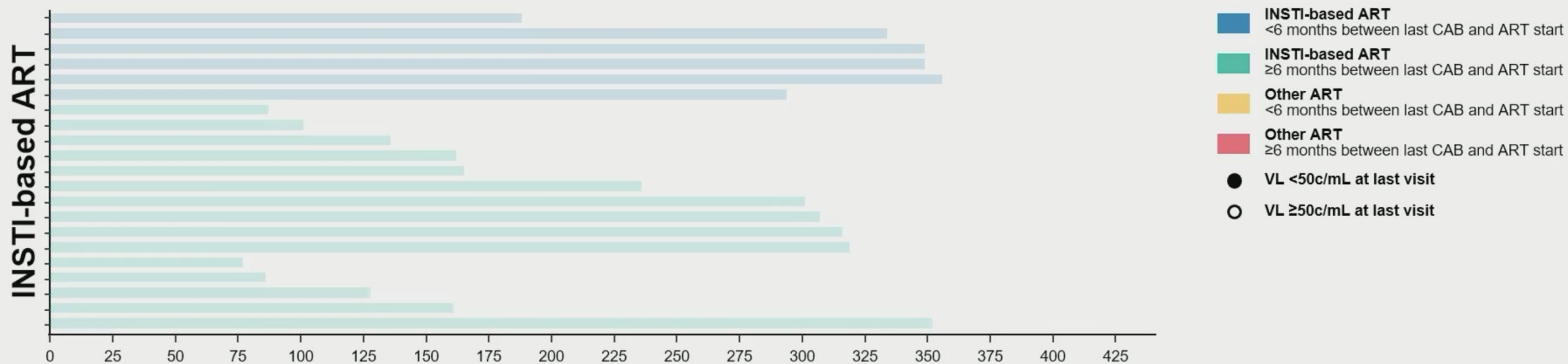


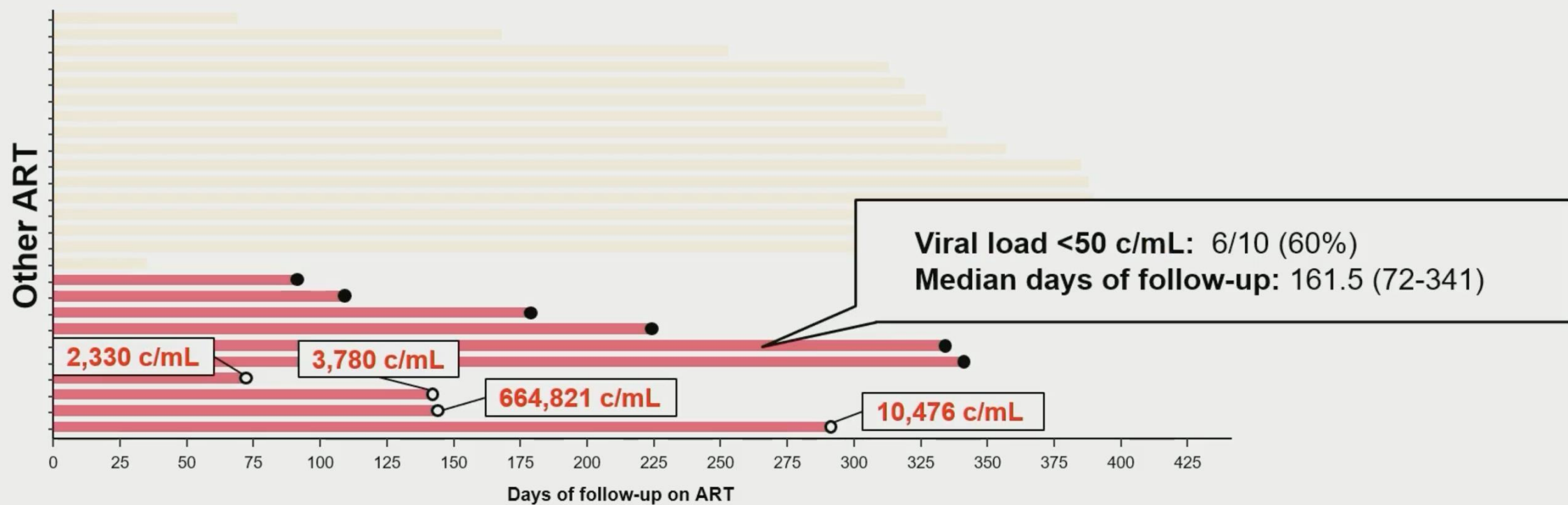
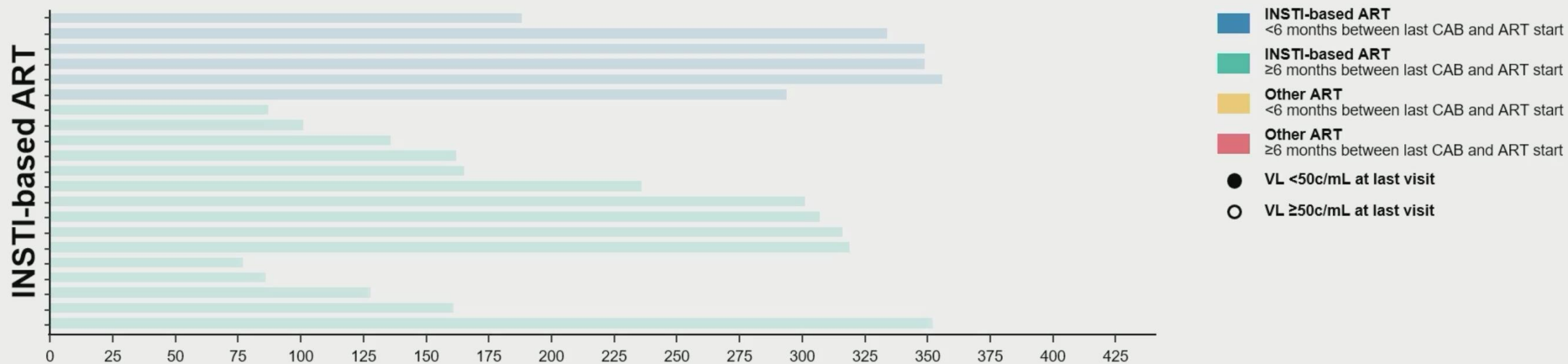


- **INSTI-based ART**  
 <6 months between last CAB and ART start
- **INSTI-based ART**  
 ≥6 months between last CAB and ART start
- **Other ART**  
 <6 months between last CAB and ART start
- **Other ART**  
 ≥6 months between last CAB and ART start
- VL <50c/mL at last visit
- VL ≥50c/mL at last visit

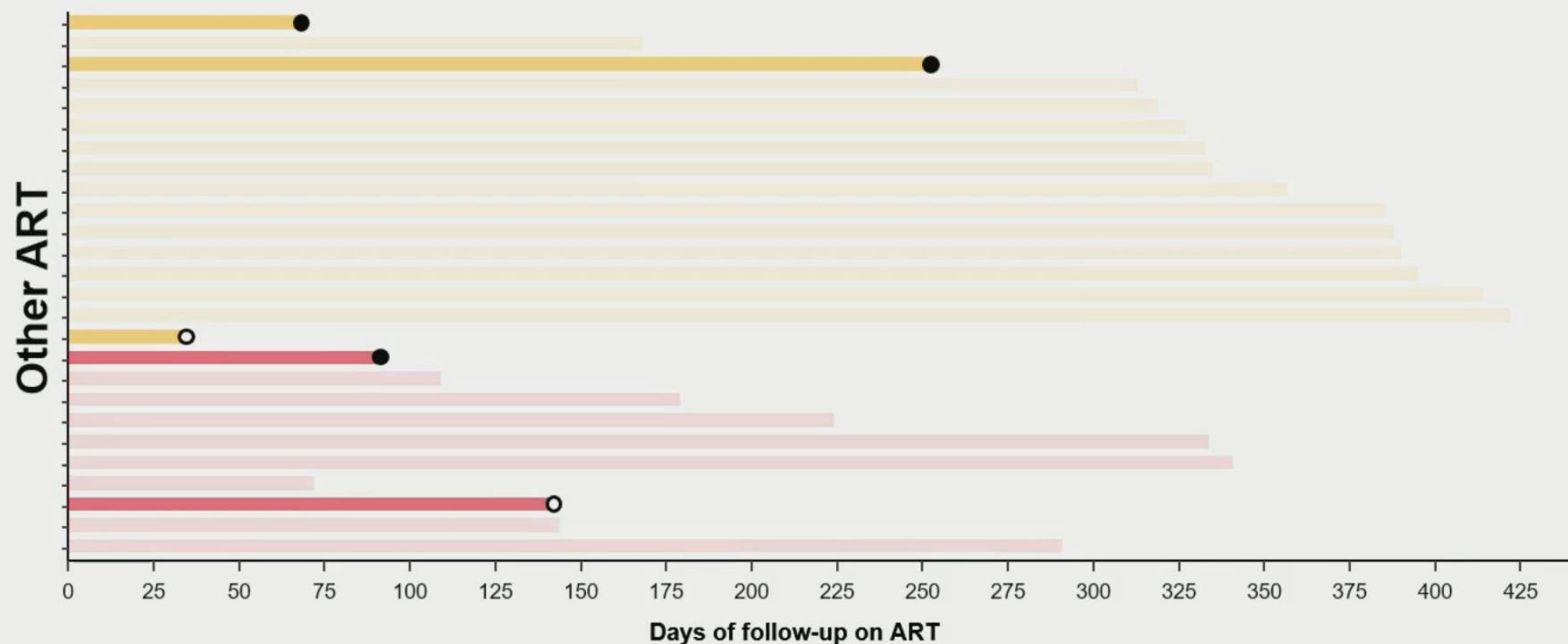
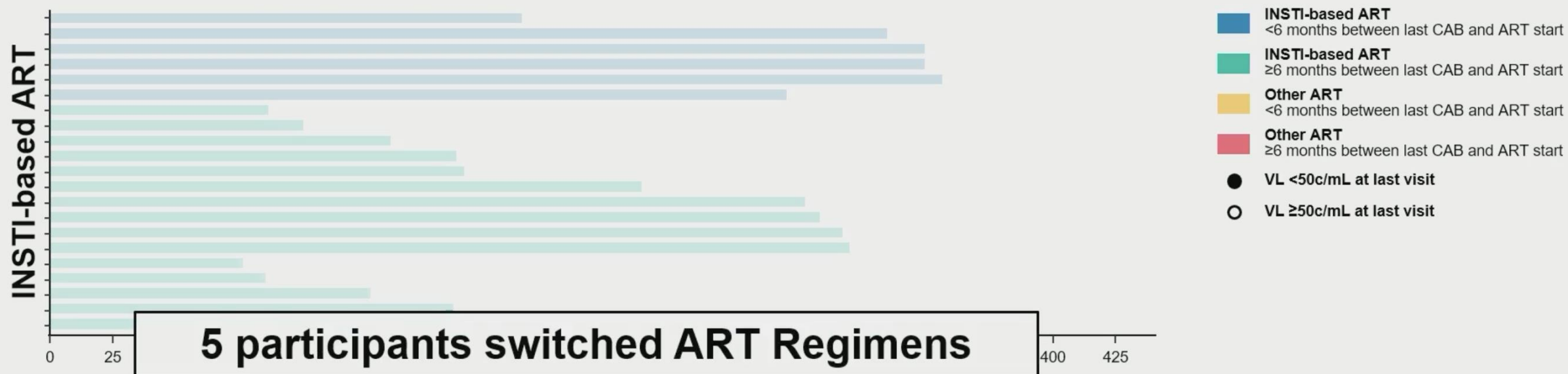


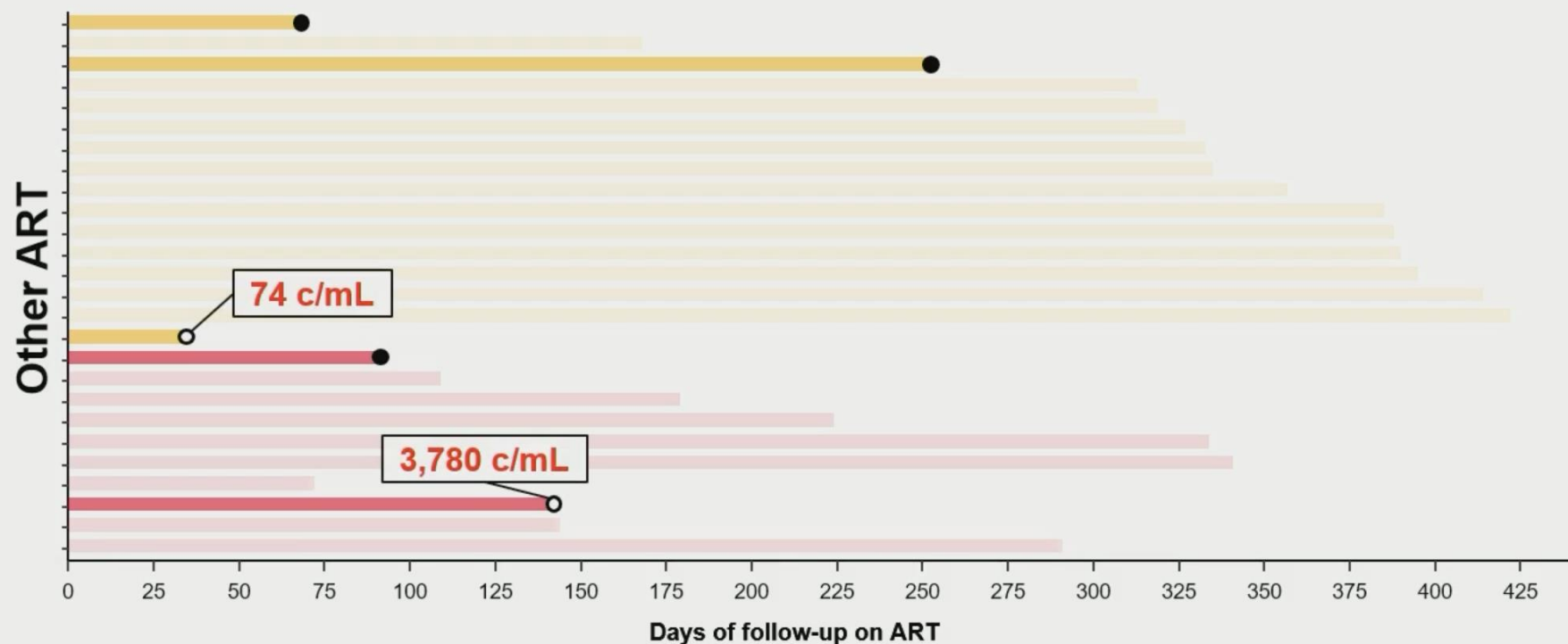
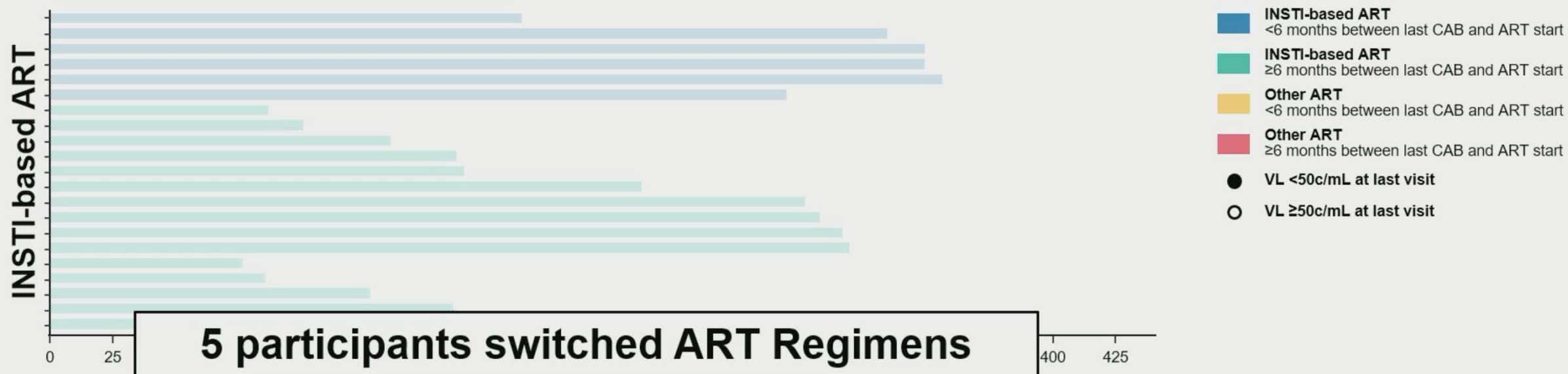
Days of follow-up on ART

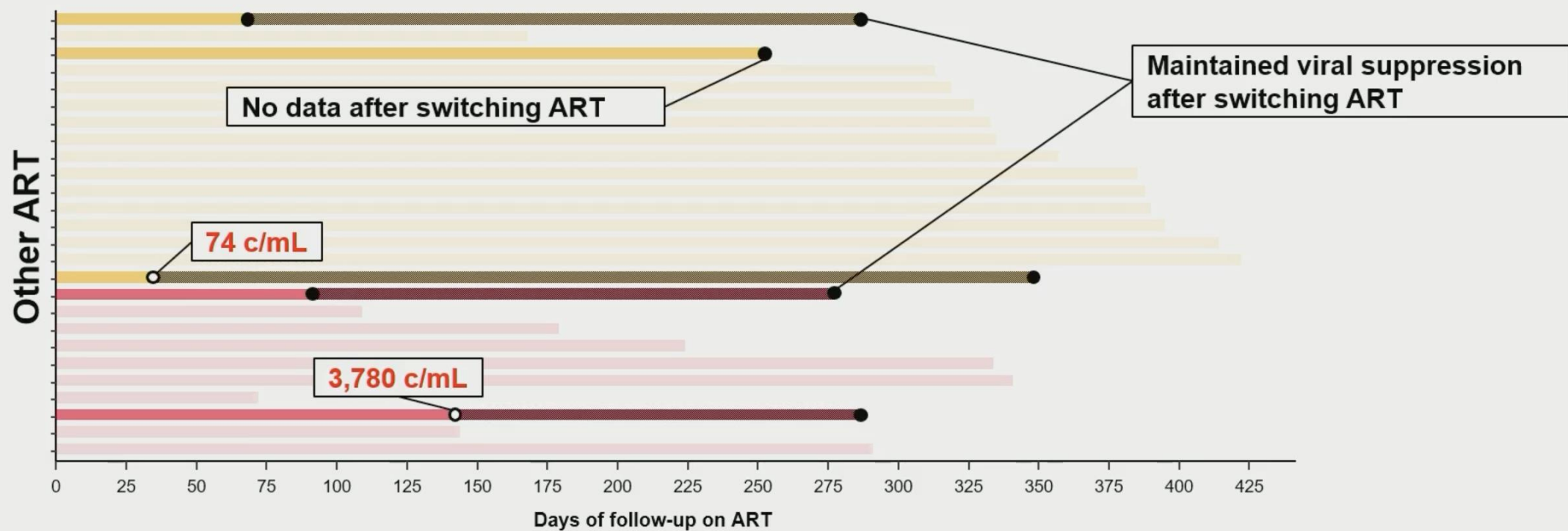
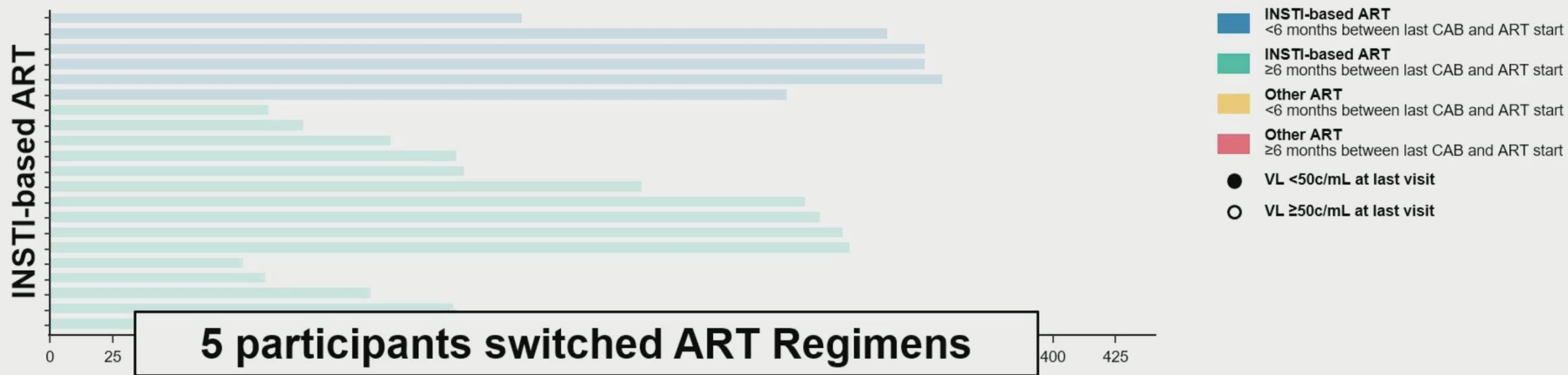


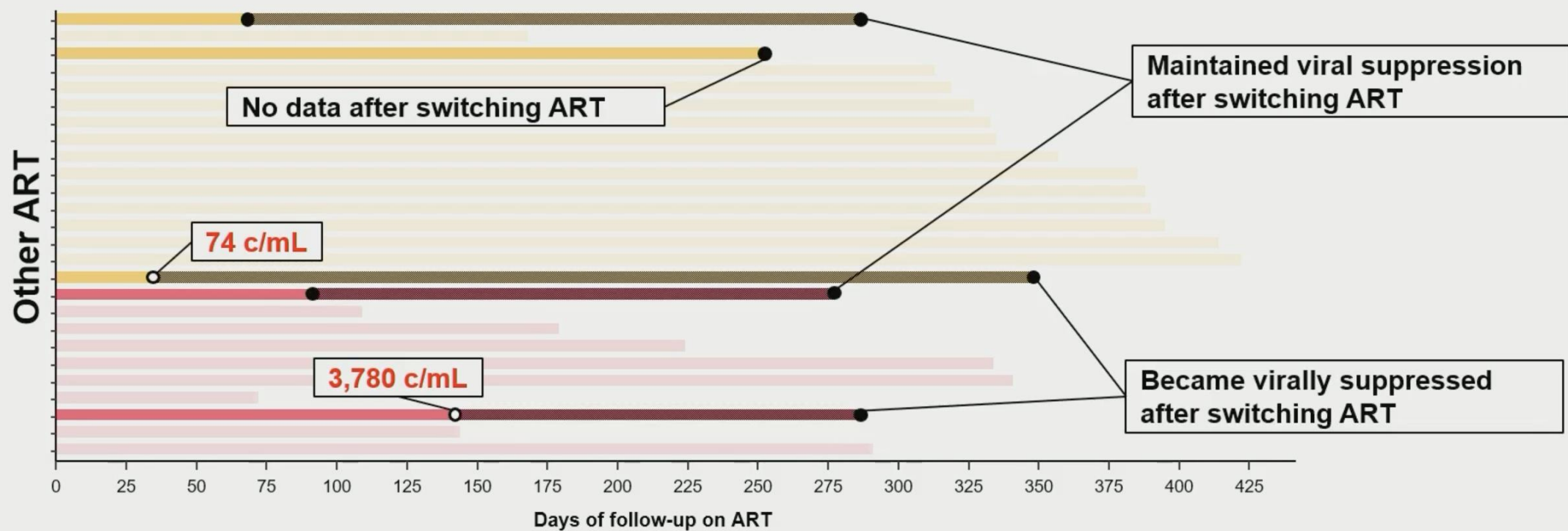
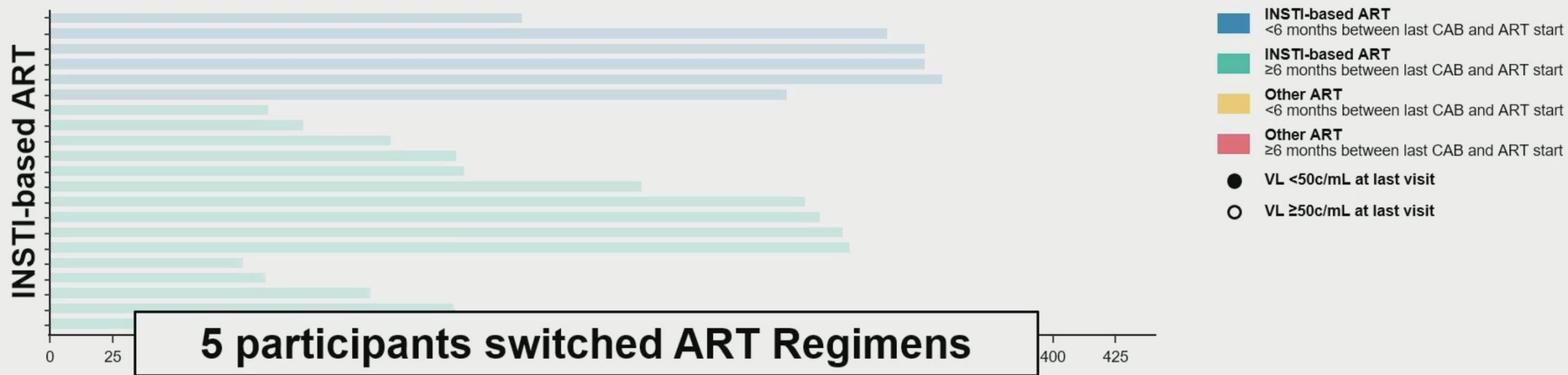


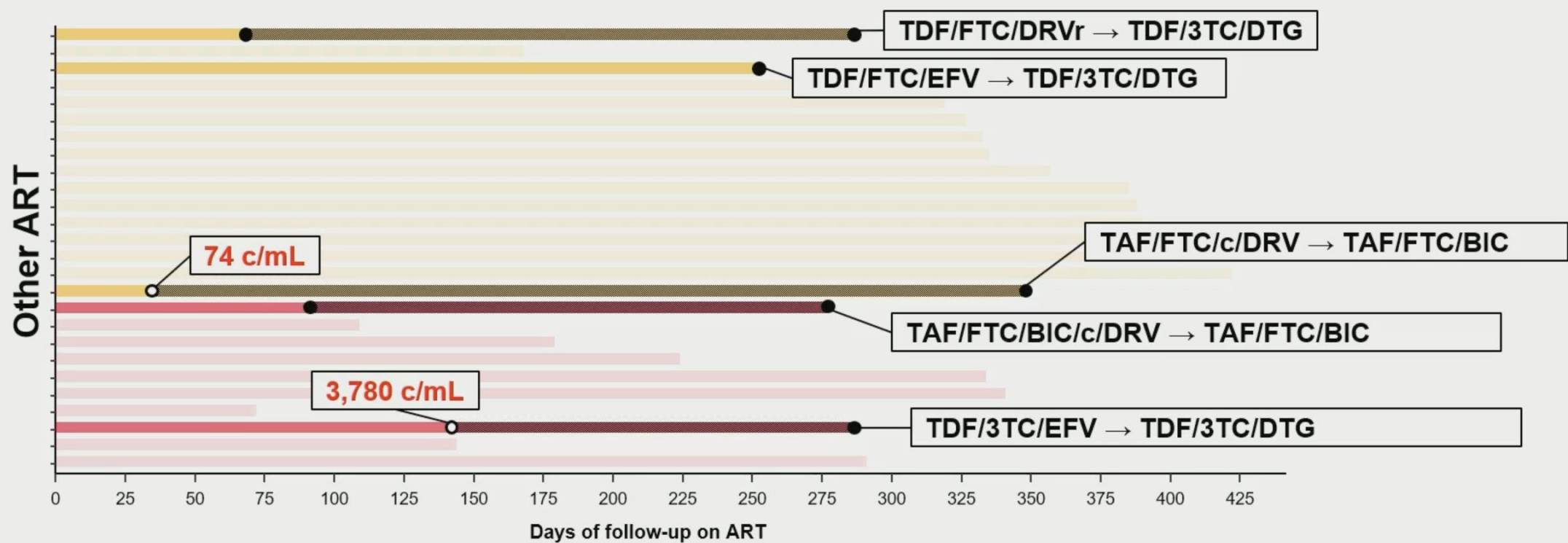
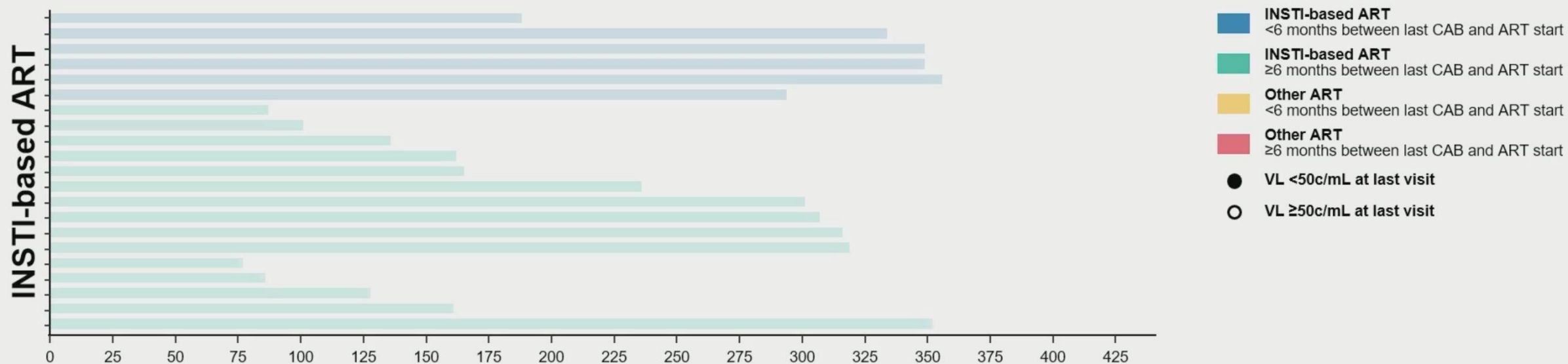




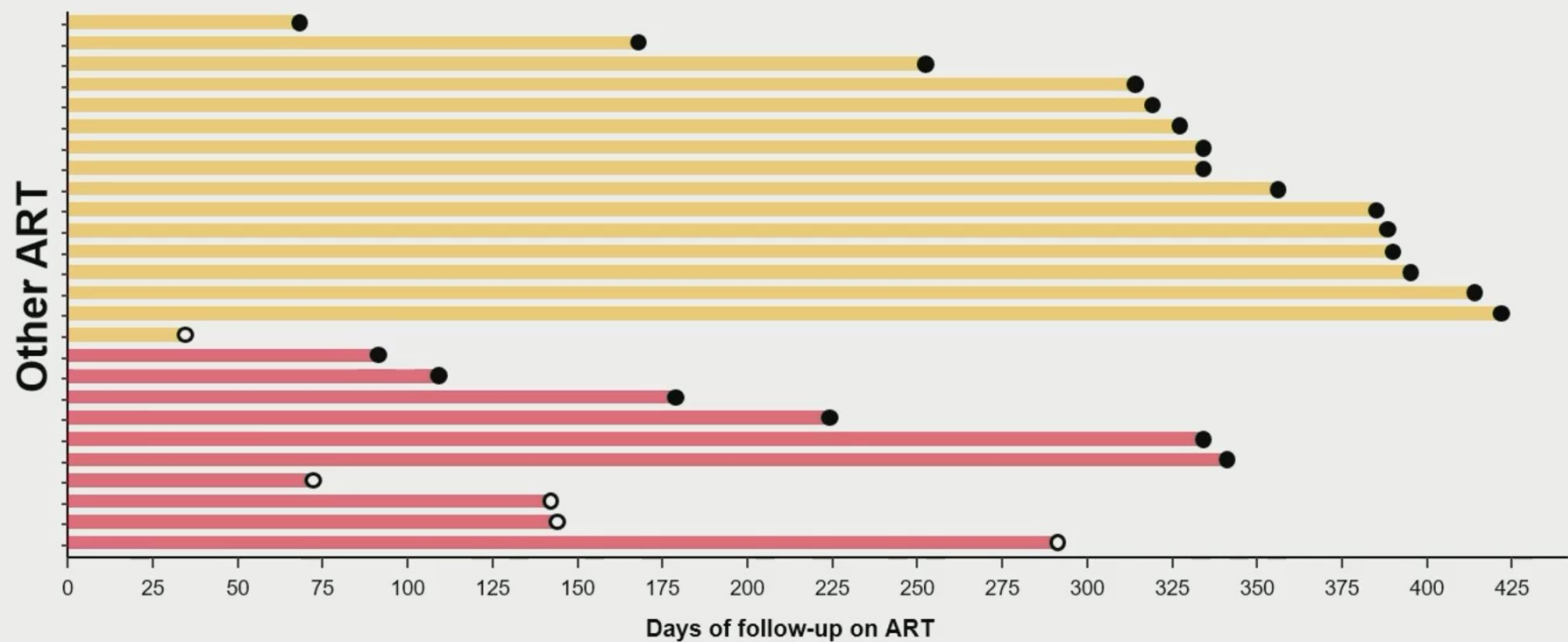
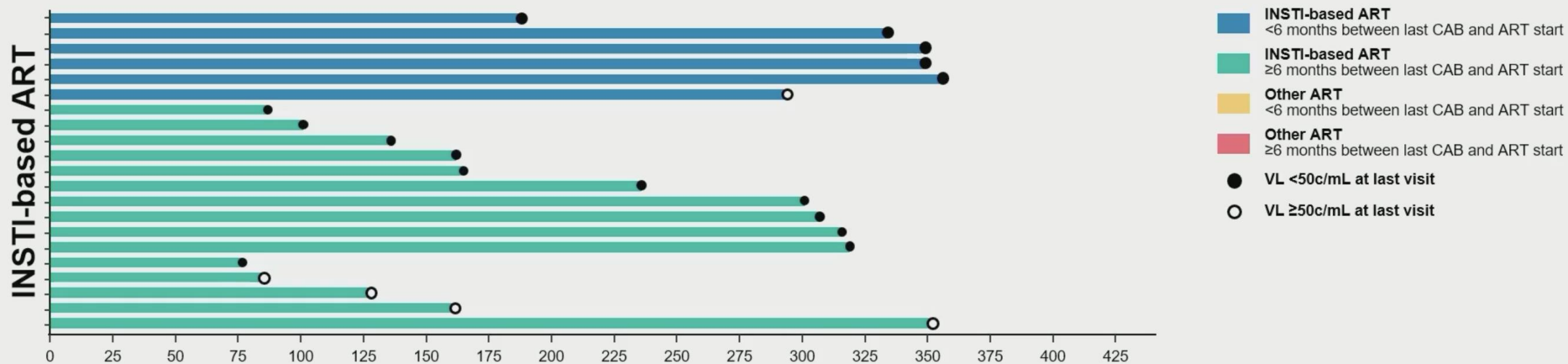


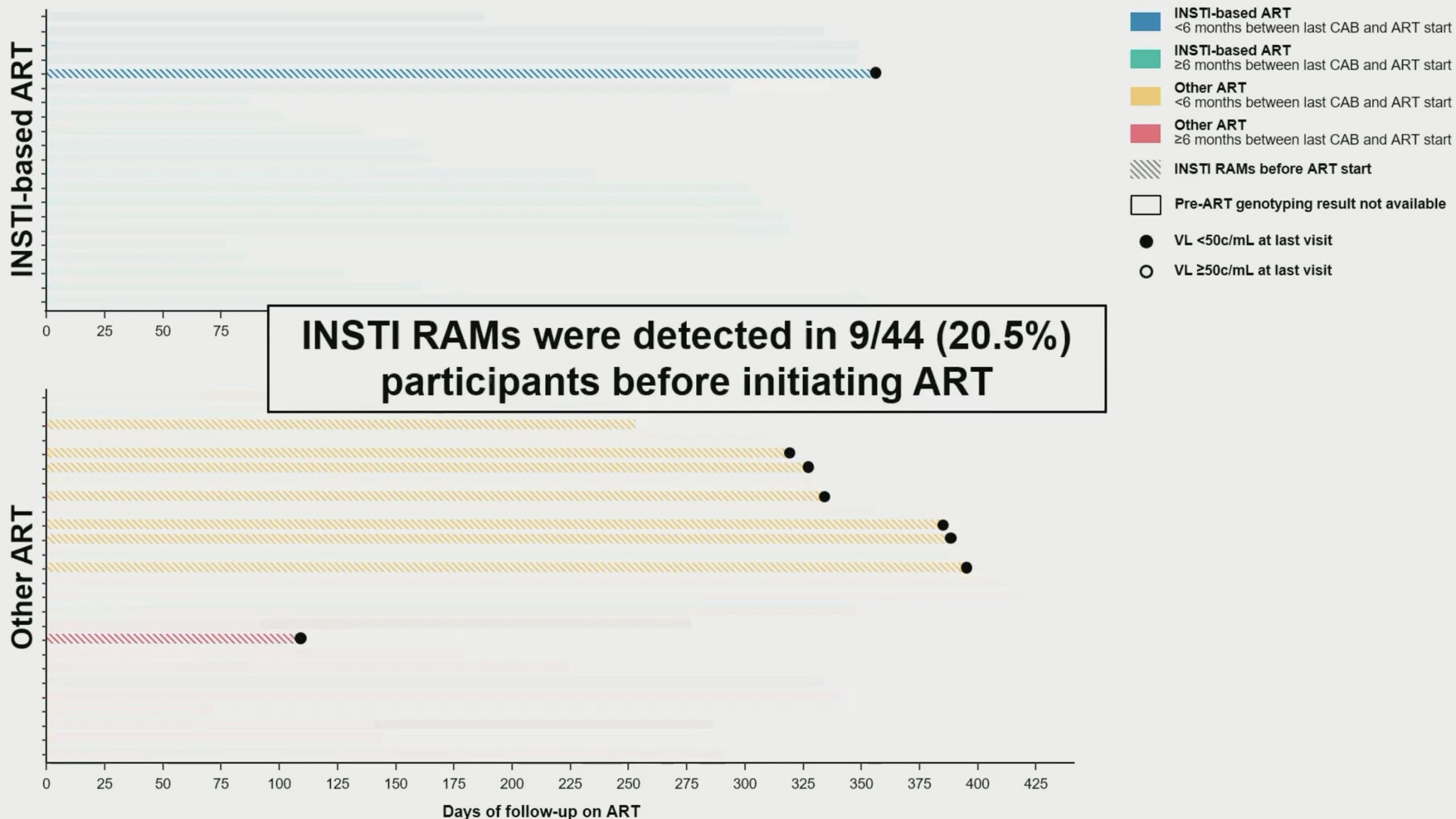




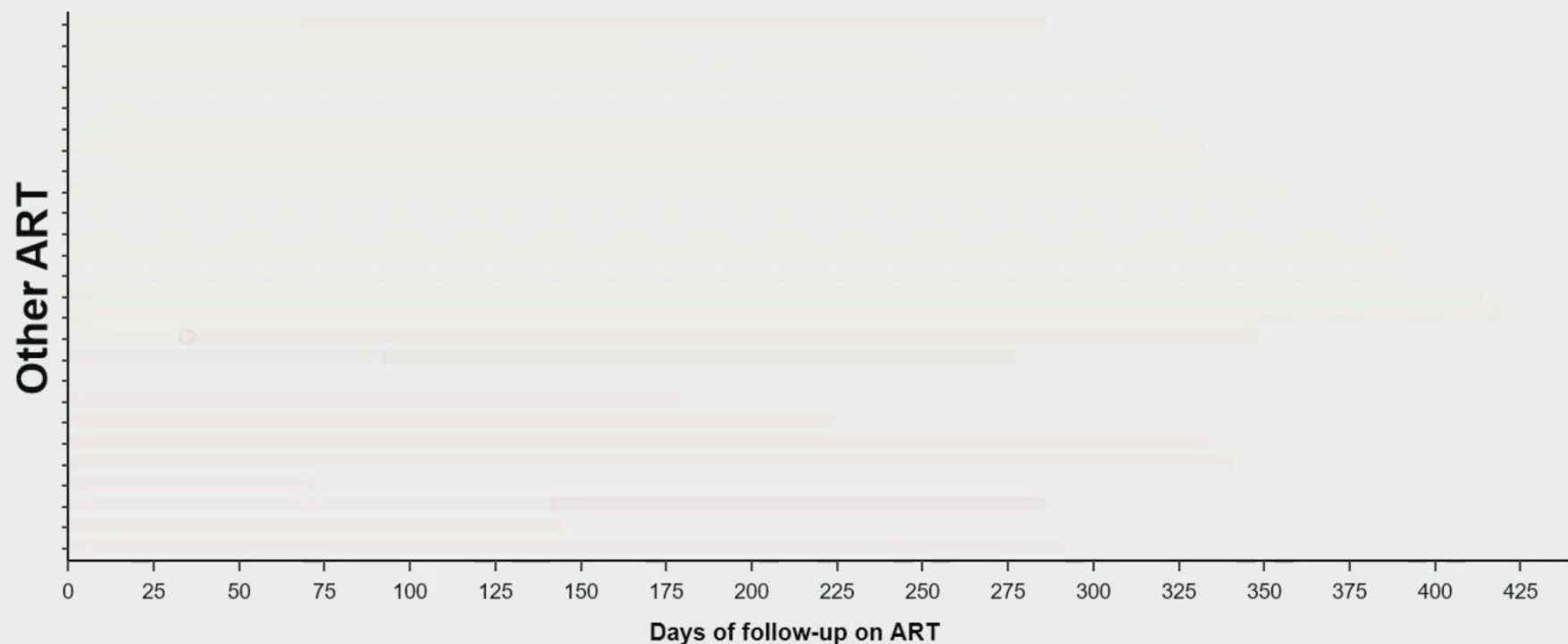
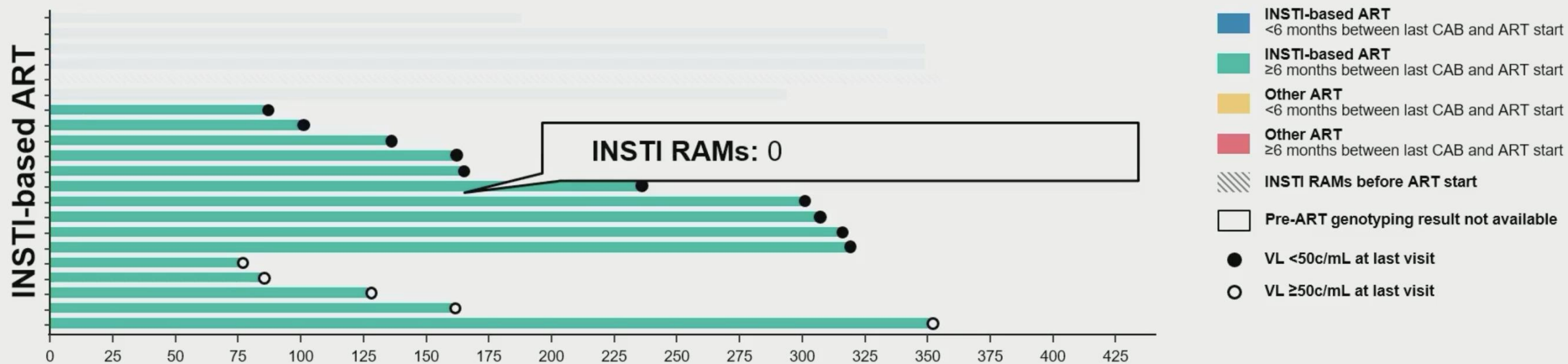


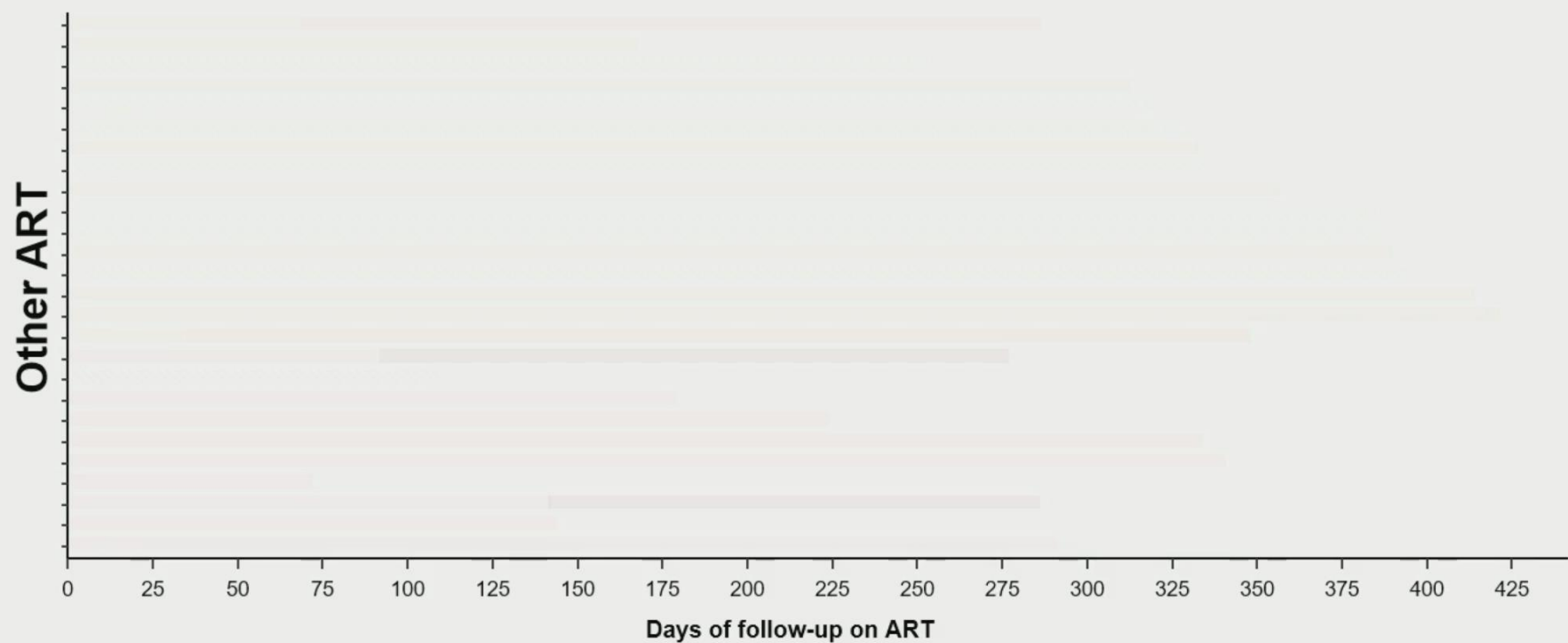
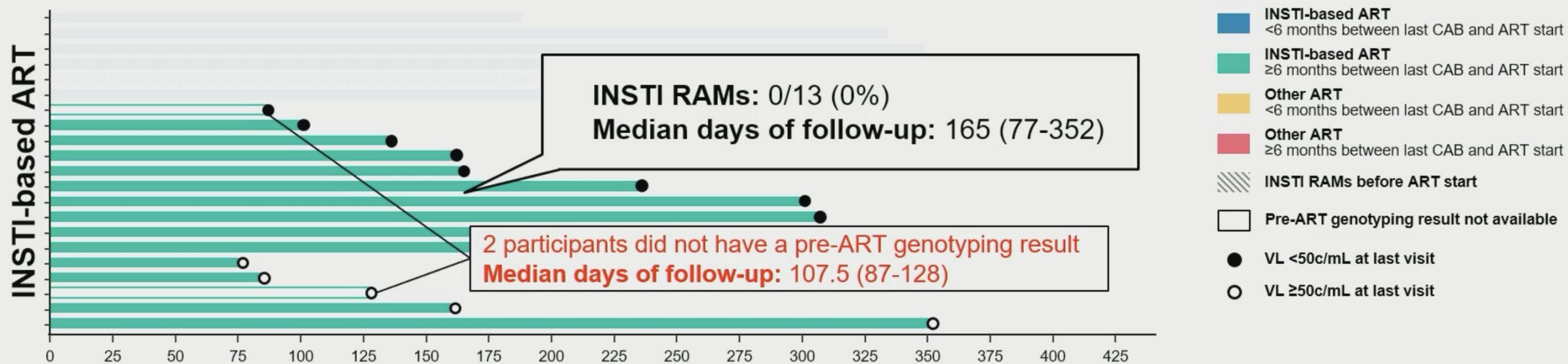




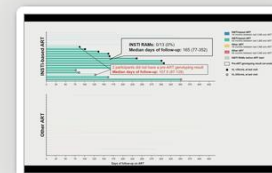
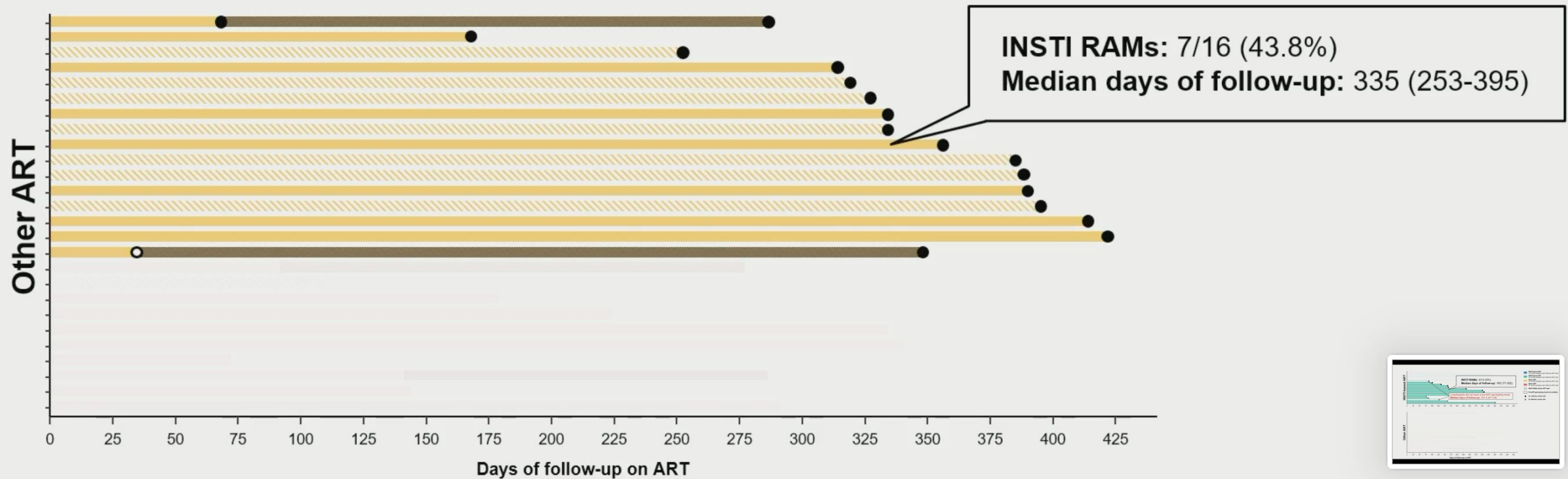
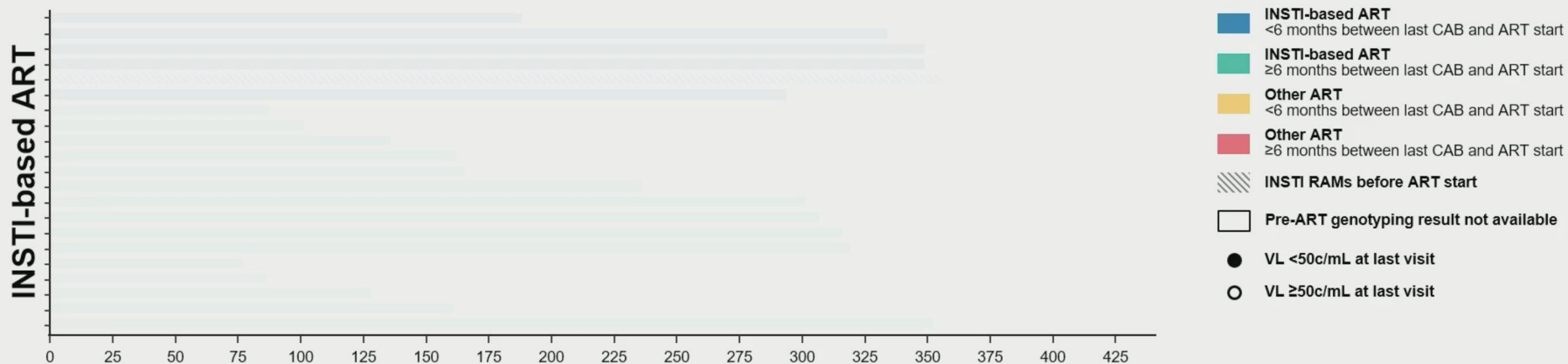


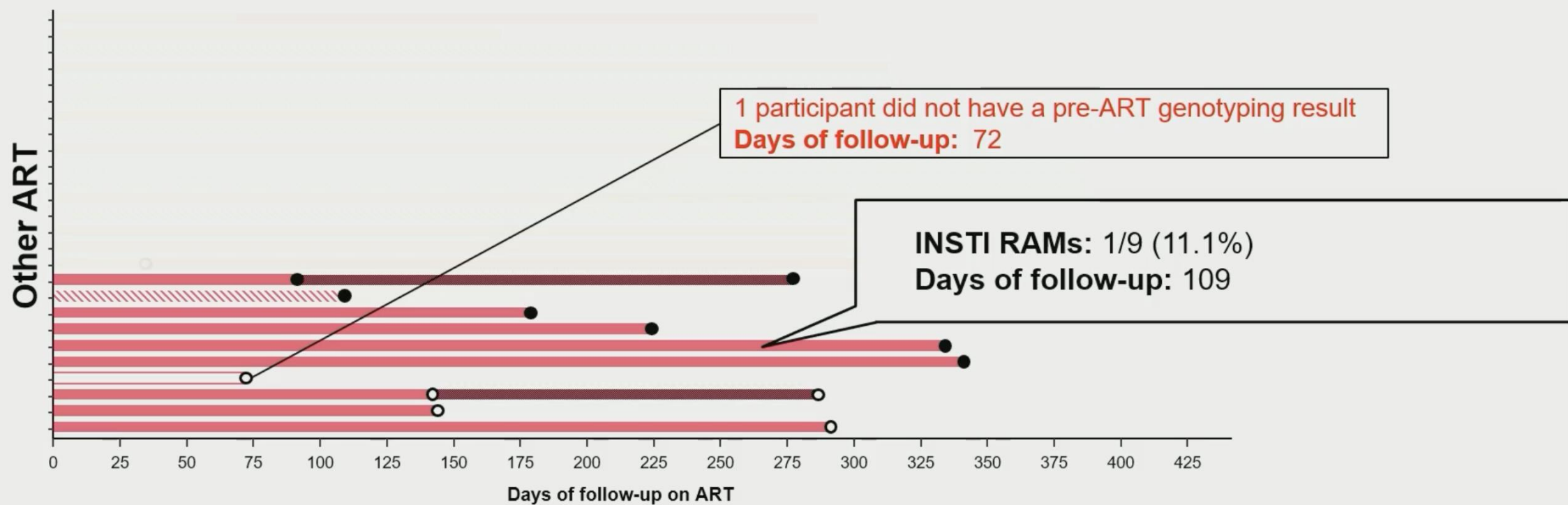
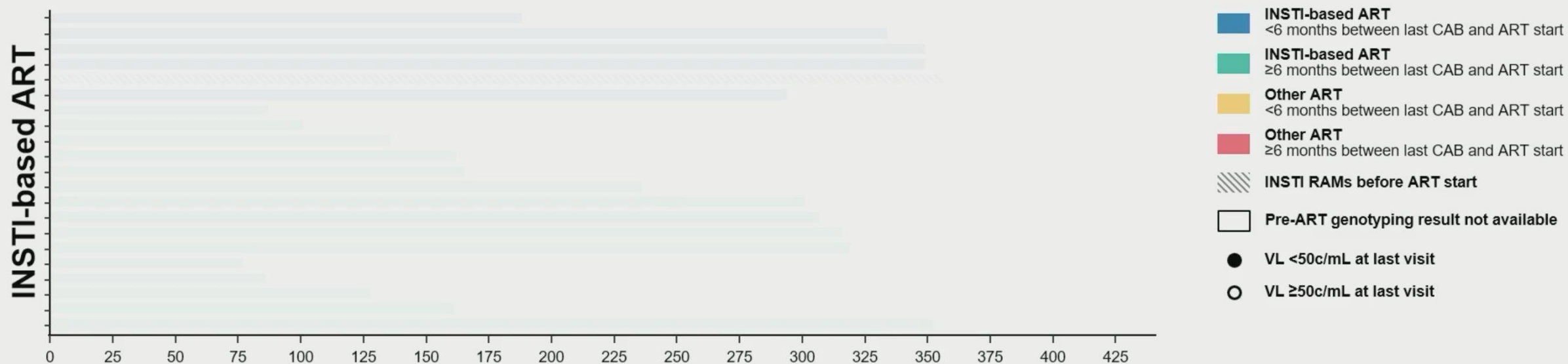


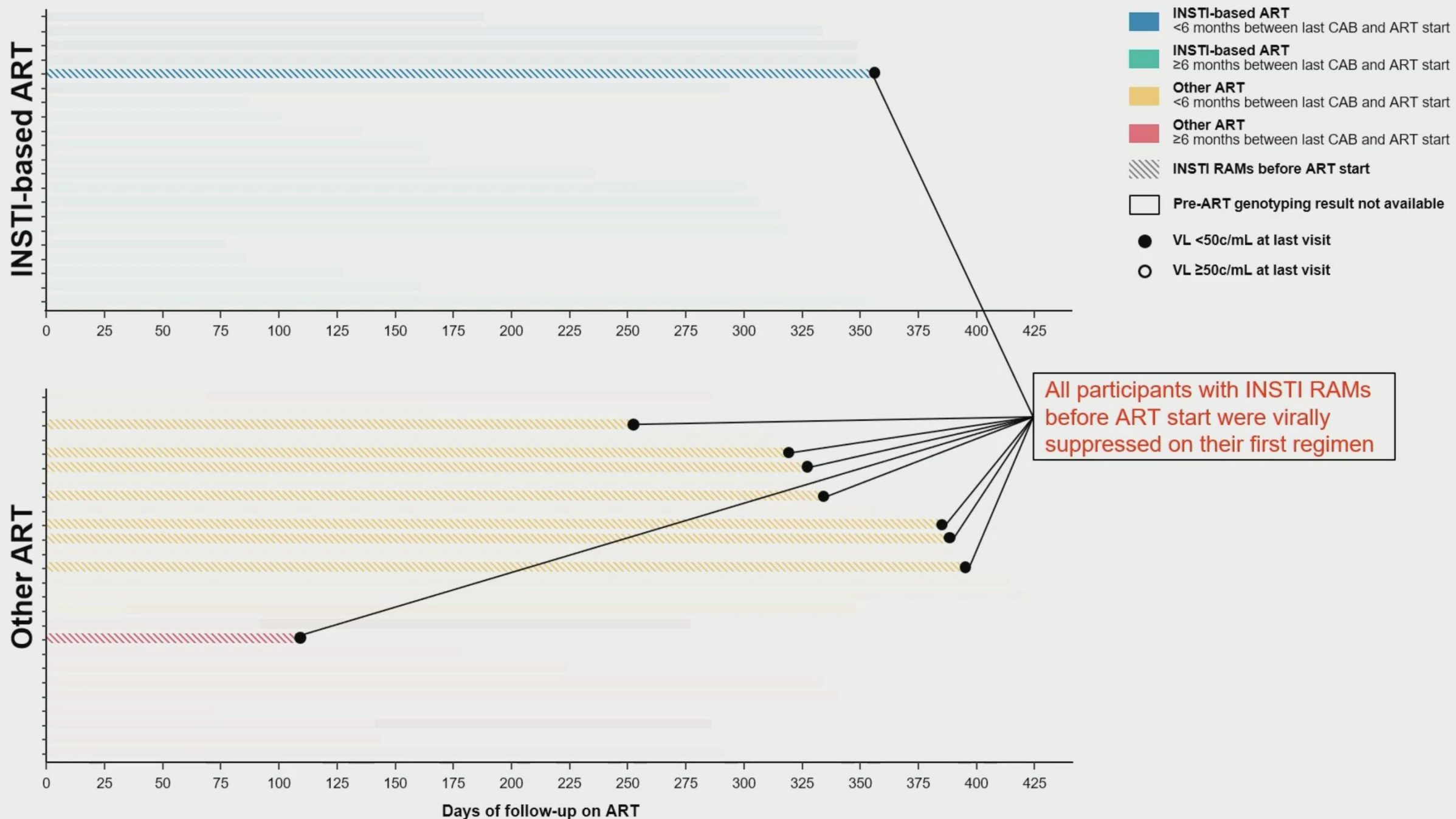


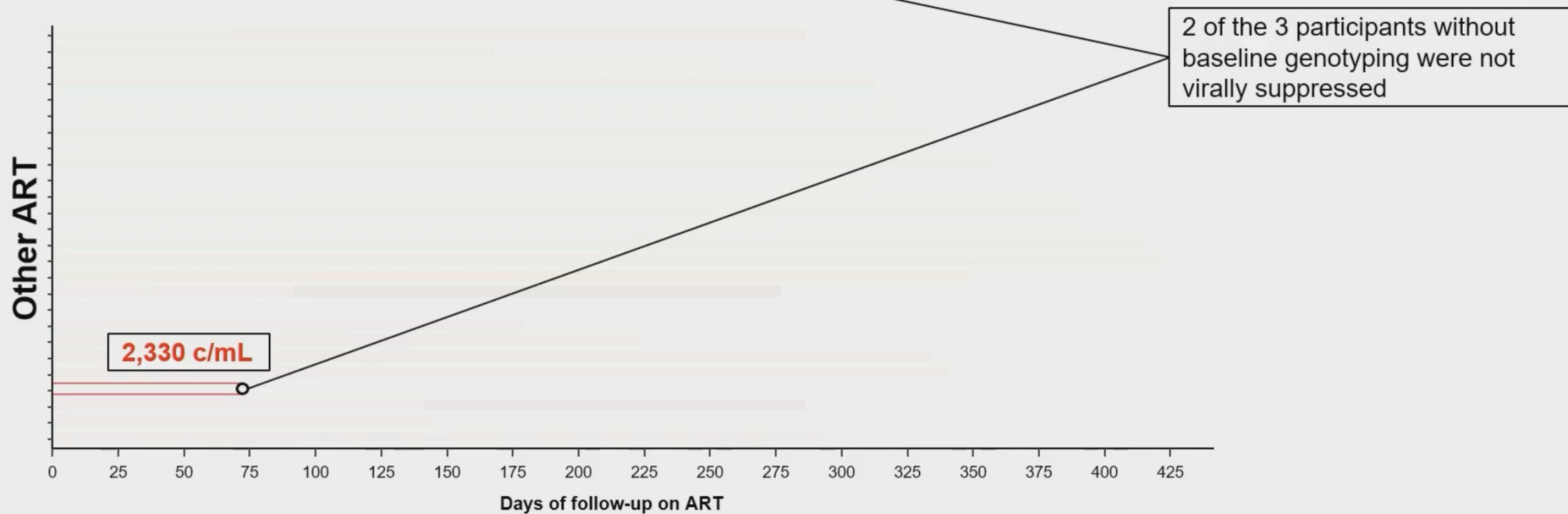
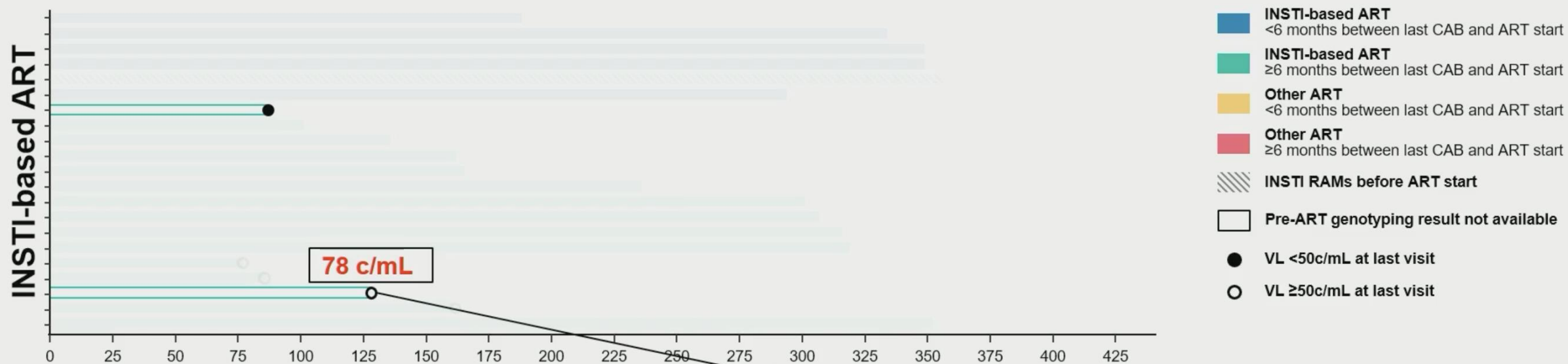




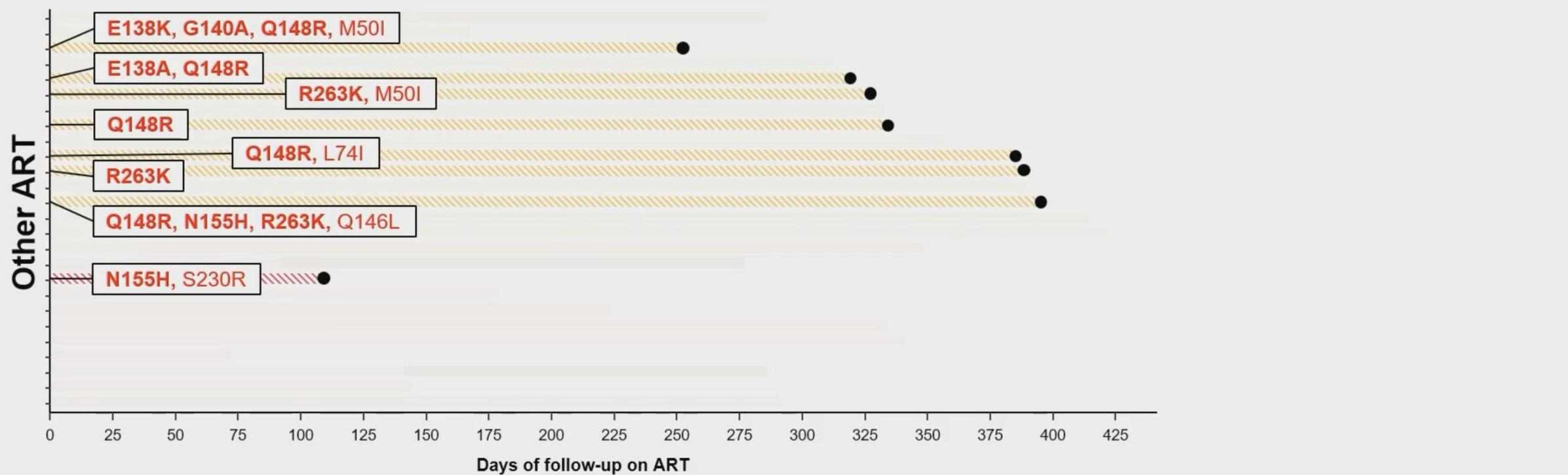
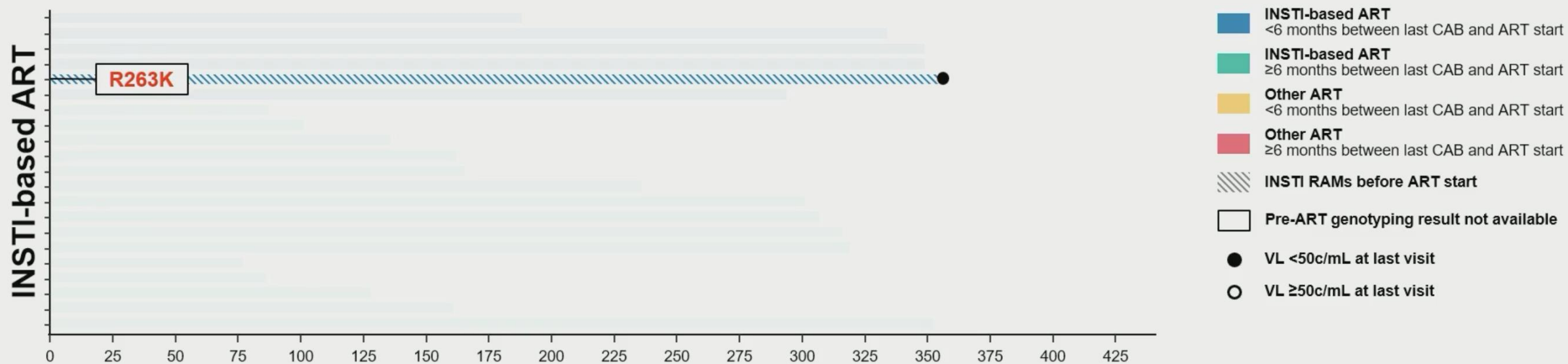














# RESULTS

	INSTI-based ART			Other ART		
	Overall	<6 months*	≥6 months*	Overall	<6 months*	≥6 months*
<b>VIRAL LOAD &lt;50 C/mL, N (%)</b>	15/21 (71.4)	5/6 (83.3)	10/15 (66.7)	21/26 (80.8)	15/16 (93.8)	6/10 (60)
<b>DAYS OF FOLLOW-UP, MEDIAN (RANGE)</b>	236 (77-356)	341.5 (188-356)	162 (77-352)	316 (35-422)	334 (35-422)	161.5 (72-341)
<b>ART REGIMEN SWITCH, N (%)</b>	0/21 (0)	0/6 (0)	0/15 (0)	5/26 (19.2)	3/16 (18.8)	2/10 (20)
<b>MAINTAINED VIRAL SUPPRESSION</b>	-	-	-	2/5 (40)	1/3 (33.3)	1/2 (50)
<b>BECAME VIRALLY SUPPRESSED</b>	-	-	-	2/5 (40)	1/3 (33.3)	1/2 (50)
<b>NO FOLLOW-UP DATA</b>	-	-	-	1/5 (20)	1/3 (33.3)	0/2 (0)
<b>INSTI RAMS DETECTED, N(%)</b>	1/19 (5.3) <sup>†</sup>	1/6 (16.7)	0/13 <sup>†</sup> (0)	8/25 (32.0) <sup>†</sup>	7/16 (43.8)	1/9 <sup>†</sup> (11.1)
<b>VIRAL LOAD &lt;50 c/mL, N (%)</b>	1/1 (100)	1/1 (100)	-	8/8 (100)	7/7 (100)	1/1 (100)

\*Time between last CAB injection and start of ART.

<sup>†</sup>Pre-ART genotyping not available for 3 participants; two were not virally suppressed.

# RESULTS

	INSTI-based ART			Other ART		
	Overall	<6 months*	≥6 months*	Overall	<6 months*	≥6 months*
<b>VIRAL LOAD &lt;50 c/mL, N (%)</b>	15/21 (71.4)	5/6 (83.3)	10/15 (66.7)	21/26 (80.8)	15/16 (93.8)	6/10 (60)
DAYS OF FOLLOW-UP, MEDIAN (RANGE)	236 (77-356)	341.5 (188-356)	162 (77-352)	316 (35-422)	334 (35-422)	161.5 (72-341)
ART REGIMEN SWITCH, N (%)	0/21 (0)	0/6 (0)	0/15 (0)	5/26 (19.2)	3/16 (18.8)	2/10 (20)
MAINTAINED VIRAL SUPPRESSION	-	-	-	2/5 (40)	1/3 (33.3)	1/2 (50)
BECAME VIRALLY SUPPRESSED	-	-	-	2/5 (40)	1/3 (33.3)	1/2 (50)
NO FOLLOW-UP DATA	-	-	-	1/5 (20)	1/3 (33.3)	0/2 (0)
INSTI RAMS DETECTED, N(%)	1/19 (5.3) <sup>†</sup>	1/6 (16.7)	0/13 <sup>†</sup> (0)	8/25 (32.0) <sup>†</sup>	7/16 (43.8)	1/9 <sup>†</sup> (11.1)
VIRAL LOAD <50 c/mL, N (%)	1/1 (100)	1/1 (100)	-	8/8 (100)	7/7 (100)	1/1 (100)

\*Time between last CAB injection and start of ART.

<sup>†</sup>Pre-ART genotyping not available for 3 participants; two were not virally suppressed.

# CONCLUSIONS

---

- HIV Infections in the setting of CAB-LA PrEP are extremely rare
  - This is a case series of 47 infections over the life-cycle of HPTN 083
- Incomplete information guiding site-based ART choices confounds interpretation
- Similar short-term ART outcomes were observed for MSM/TGW acquiring HIV with CAB-LA PrEP between INSTI-based or other (PI-based) ART regimens
- The majority of cases identified within 6 months of CAB administration suppressed on INSTI-based ART
  - This includes one case with R263K
- More data are required to define optimal ART regimen selection for individuals acquiring HIV in the setting of CAB-LA PrEP

# ACKNOWLEDGEMENTS

---

## Sponsors

- U.S. National Institute of Allergy and Infectious Diseases (NIAID), National Institute of Mental Health (NIMH), National Institute on Drug Abuse (NIDA), and the National Institute of Child Health and Human Development (NICHD) all components of the U.S. National Institutes of Health (NIH)
- Additional funding from ViiV Healthcare

## HIV Prevention Trials Network (HPTN)

- Laboratory Center (Johns Hopkins University)
- Statistical Center for HIV/AIDS Research and Prevention (SCHARP), Fred Hutchinson Cancer Research Center
- Leadership and Operations Center, FHI 360
- HPTN Leadership

## Pharmaceutical Support

- ViiV Healthcare
- Gilead Sciences, Inc.

## HPTN 083 Study Team

**Ryan Kofron**

**Community Program Managers  
Community Educators & Recruiters,  
CAB Members**

**Our 43 Sites in 7 countries**

**And most of all, our Study  
Participants**